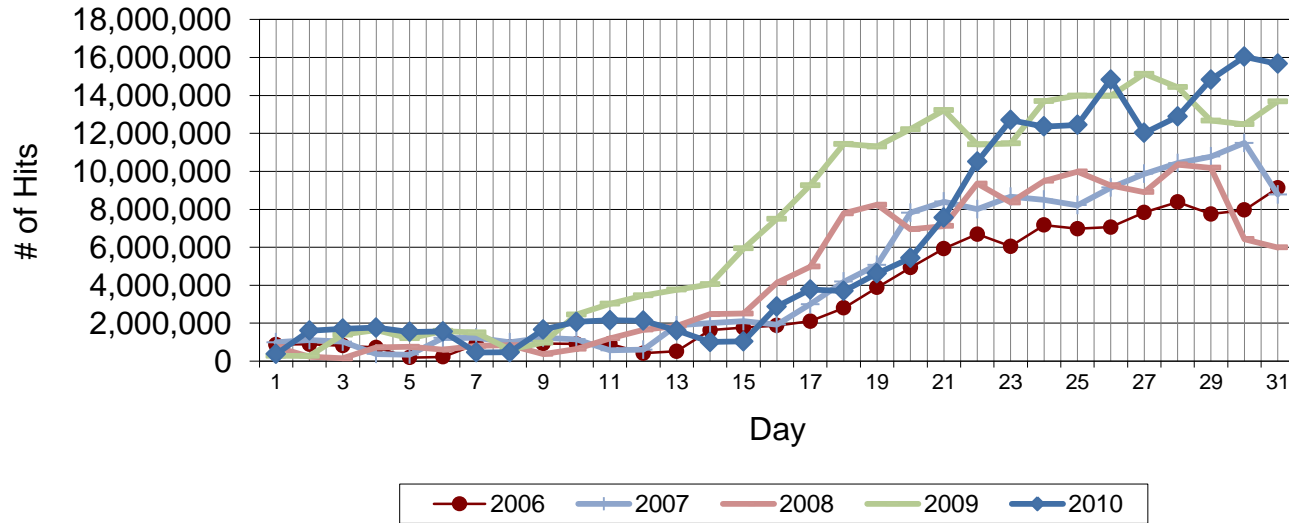


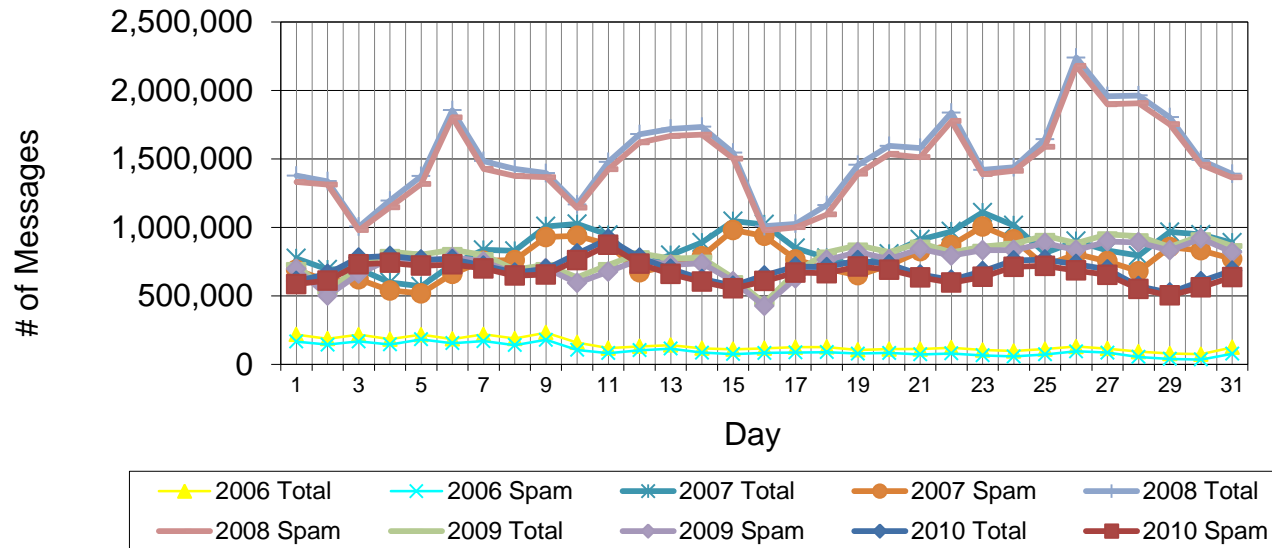
August Web Hits from CedarNet (access to off-campus sites)



The graph shows the number of Internet Web accesses ("hits") made from on-campus computers. Note that fetching a single Web page might produce several hits, depending on the number and type of embedded graphics.

	Total Count	Pct Change 1 year	Pct Change 2 years
Total Web hits, August 2001 (fall term started 09/20)	7,826,294		
Total Web hits, August 2002 (fall term started 08/28)	28,081,596	258.8%	
Total Web hits, August 2003 (fall term started 08/20)	57,409,785	104.4%	633.6%
Total Web hits, August 2004 (fall term started 08/25)	56,761,833	-1.1%	102.1%
Total Web hits, August 2005 (fall term started 08/24)	73,564,680	29.6%	28.1%
Total Web hits, August 2006 (fall term started 08/23)	108,941,440	48.1%	91.9%
Total Web hits, August 2007 (fall term started 08/22)	141,101,305	29.5%	91.8%
Total Web hits, August 2008 (fall term started 08/20)	143,081,555	1.4%	31.3%
Total Web hits, August 2009 (fall term started 08/19)	230,126,760	60.8%	63.1%
Total Web hits, August 2010 (fall term started 08/25)	183,428,053	-20.3%	28.2%

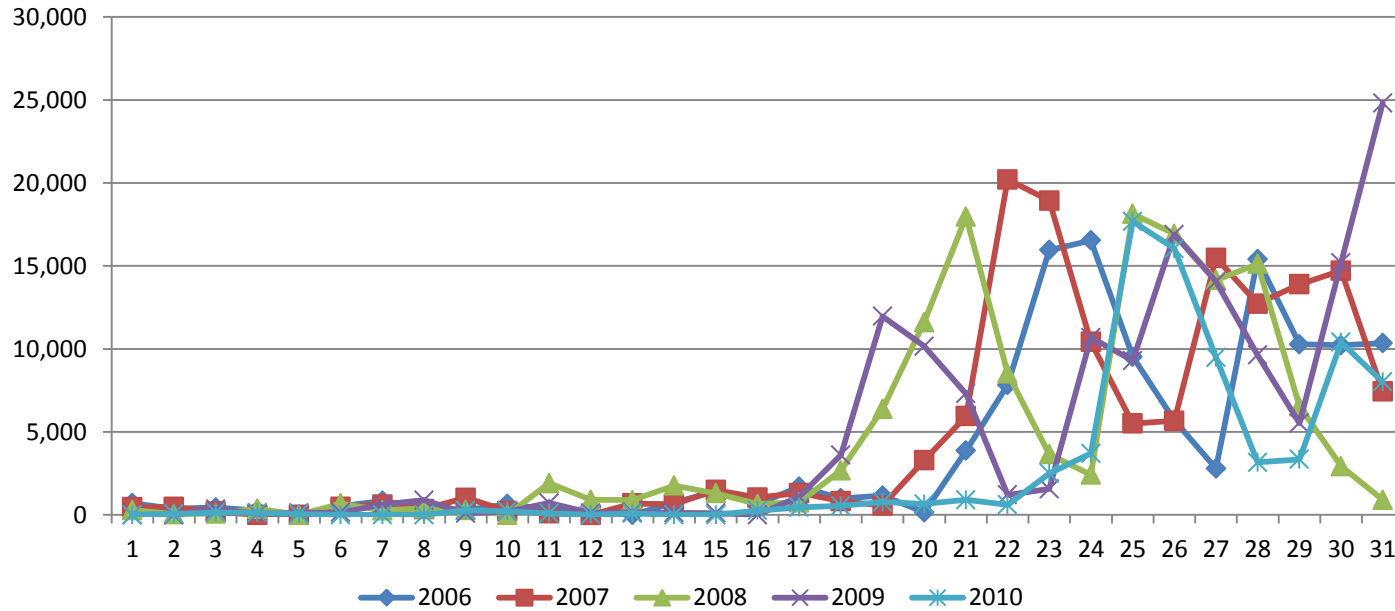
August Incoming Email



Total incoming email volume, August 2010	21,711,447
Total incoming spam blocked, August 2010	20,549,853
Net incoming email, August 2010	1,161,594
Percent email not blocked	5.4%

	Total Count	Pct Change 1 year	Pct Change 2 years
Total incoming email volume, August 2005	2,588,547		
Total incoming email volume, August 2006	4,381,393	69.3%	
Total incoming email volume, August 2007	26,474,395	504.2%	922.8%
Total incoming email volume, August 2008	46,794,531	76.8%	968.0%
Total incoming email volume, August 2009	24,447,463	-47.8%	-7.7%
Total incoming email volume, August 2010	21,711,447	-11.2%	-53.6%

Pages Printed



	Total Count	Pct Change 1 year	Pct Change 2 years
Total pages printed August 2006	120,251		
Total pages printed August 2007	144,743	20.4%	
Total pages printed August 2008	138,590	-4.3%	15.3%
Total pages printed August 2009	146,759	5.9%	1.4%
Total pages printed August 2010	79,656	-45.7%	-42.5%