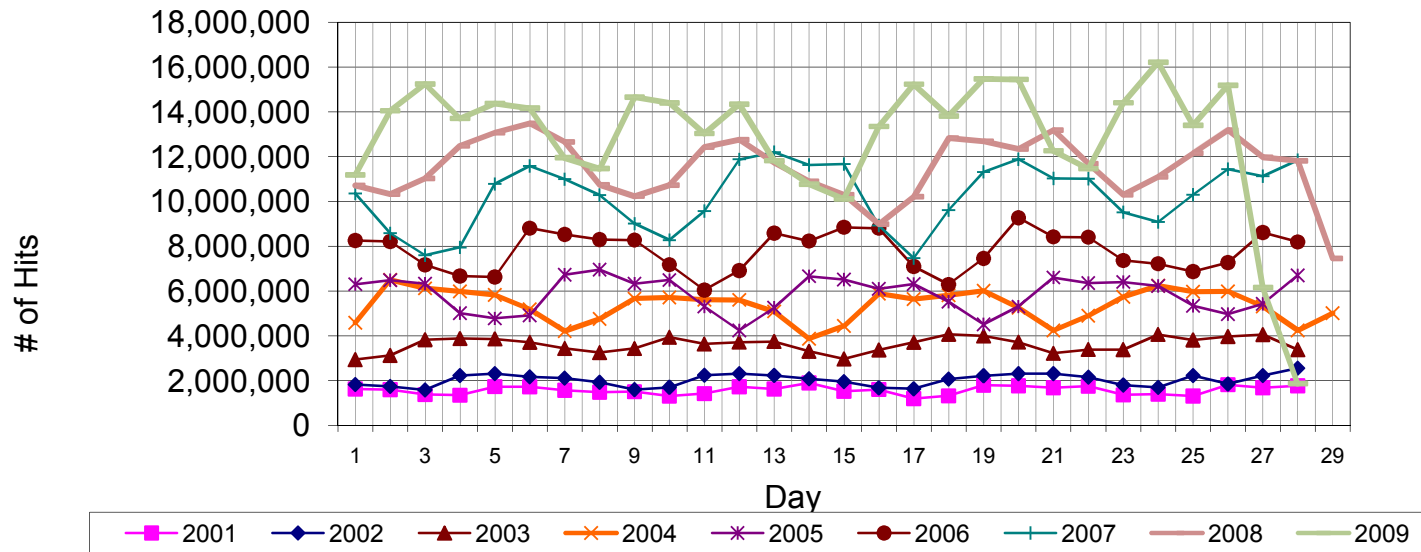


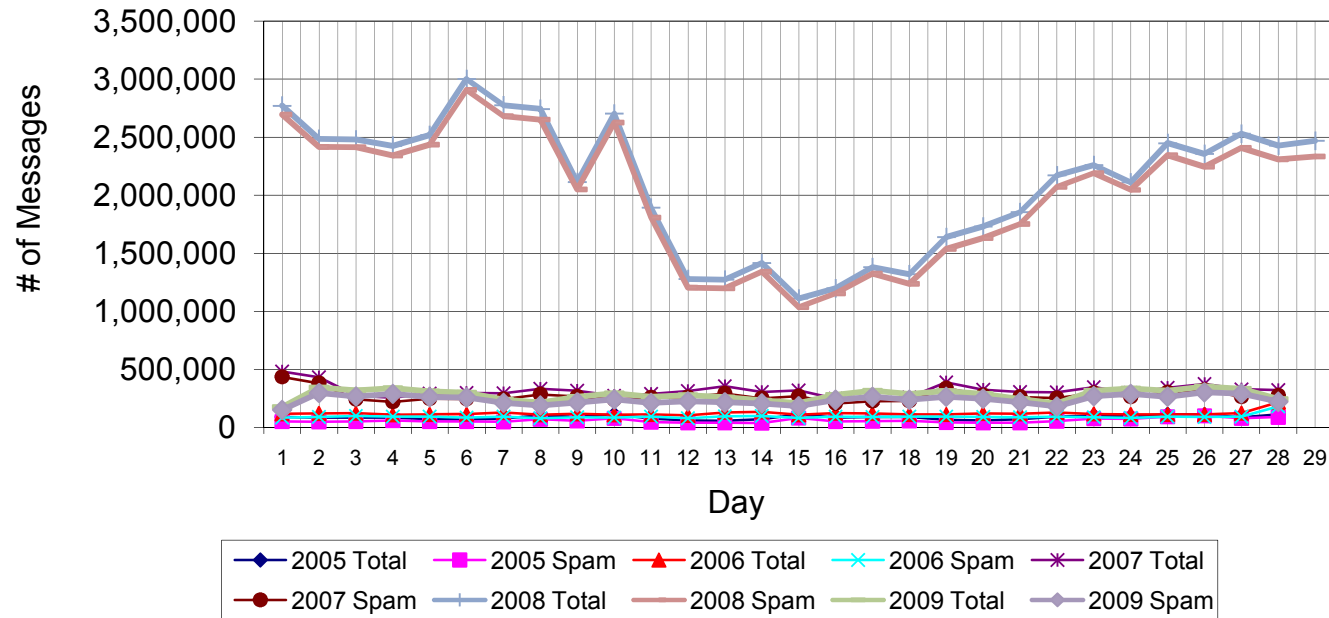
February Web Hits from CedarNet (access to off-campus sites)



The graph shows the number of Internet Web accesses ("hits") made from on-campus computers. Note that fetching a single Web page might produce several hits, depending on the number and type of embedded graphics.

| | Total Count | Pct Change One Yr | Pct Change Two Yr |
|---|----------------|-------------------------|-------------------------|
| Total Web hits, February 2001 (28 days) | 44,139,006 | | |
| Total Web hits, February 2002 (28 days) | 56,910,600 | 28.9% | |
| Total Web hits, February 2003 (28 days) | 100,967,640 | 77.4% | 128.7% |
| Total Web hits, February 2004 (29 days) | 155,610,293 | 54.1% | 173.4% |
| Total Web hits, February 2005 (28 days) | 164,162,882 | 5.5% | 62.6% |
| Total Web hits, February 2006 (28 days) | 218,077,271 | 32.8% | 40.1% |
| Total Web hits, February 2007 (28 days) | 286,972,214 | 31.6% | 74.8% |
| Total Web hits, February 2008 (29 days) | 333,539,997 | 16.2% | 52.9% |
| Total Web hits, February 2009 (28 days) | 359,687,749 | 7.8% | 25.3% |

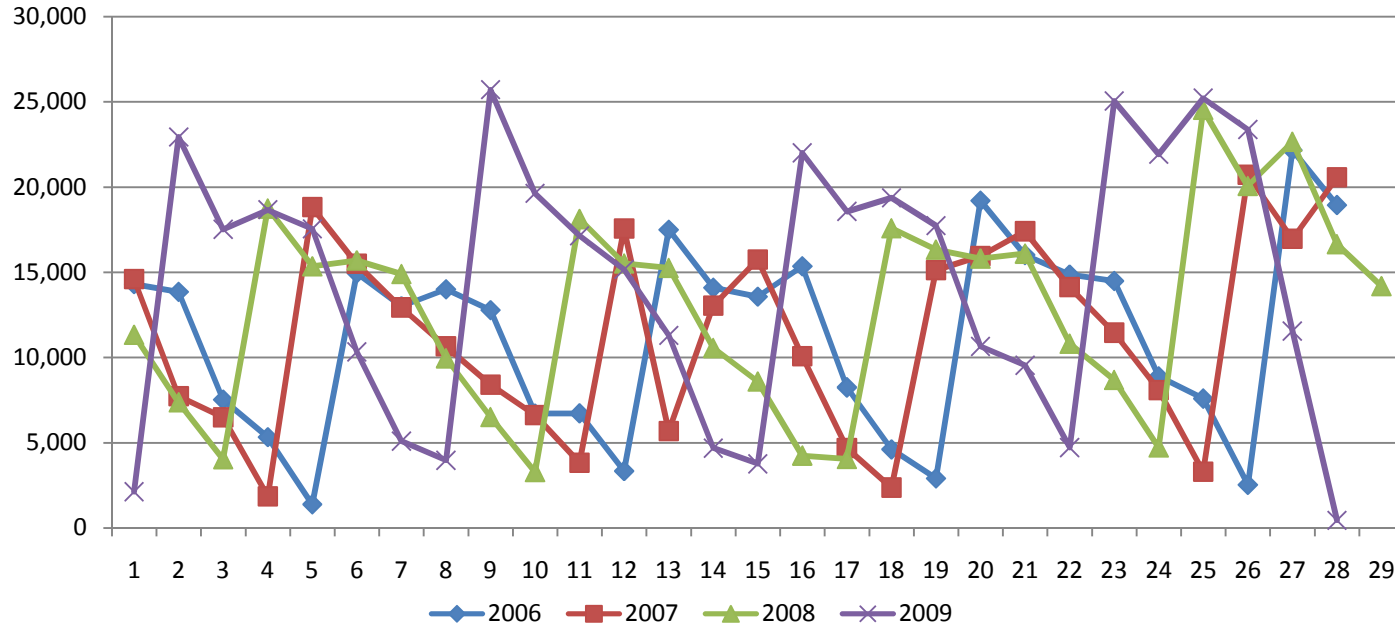
February Incoming Email



| | |
|--|-----------|
| Total incoming email volume, February 2009 | 7,921,115 |
| Total incoming spam blocked, February 2009 | 6,757,322 |
| Net incoming email, February 2009 | 1,163,793 |
| Percent email not blocked | 14.69% |

| | Total Count | Pct Change One Yr | Pct Change Two Yr |
|--|----------------|-------------------------|-------------------------|
| Total incoming email volume, February 2005 | 2,474,973 | | |
| Total incoming email volume, February 2006 | 3,435,780 | 38.8% | |
| Total incoming email volume, February 2007 | 8,972,089 | 161.1% | 262.5% |
| Total incoming email volume, February 2008 | 60,907,683 | 578.9% | 1672.7% |
| Total incoming email volume, February 2009 | 7,921,115 | -87.0% | -11.7% |

Pages Printed



| | Total Count | Pct Change |
|-----------------------------------|----------------|---------------|
| Total pages printed February 2006 | 314,823 | |
| Total pages printed February 2007 | 320,244 | 1.7% |
| Total pages printed February 2008 | 371,774 | 16.1% |
| Total pages printed February 2009 | 405,746 | 9.1% |