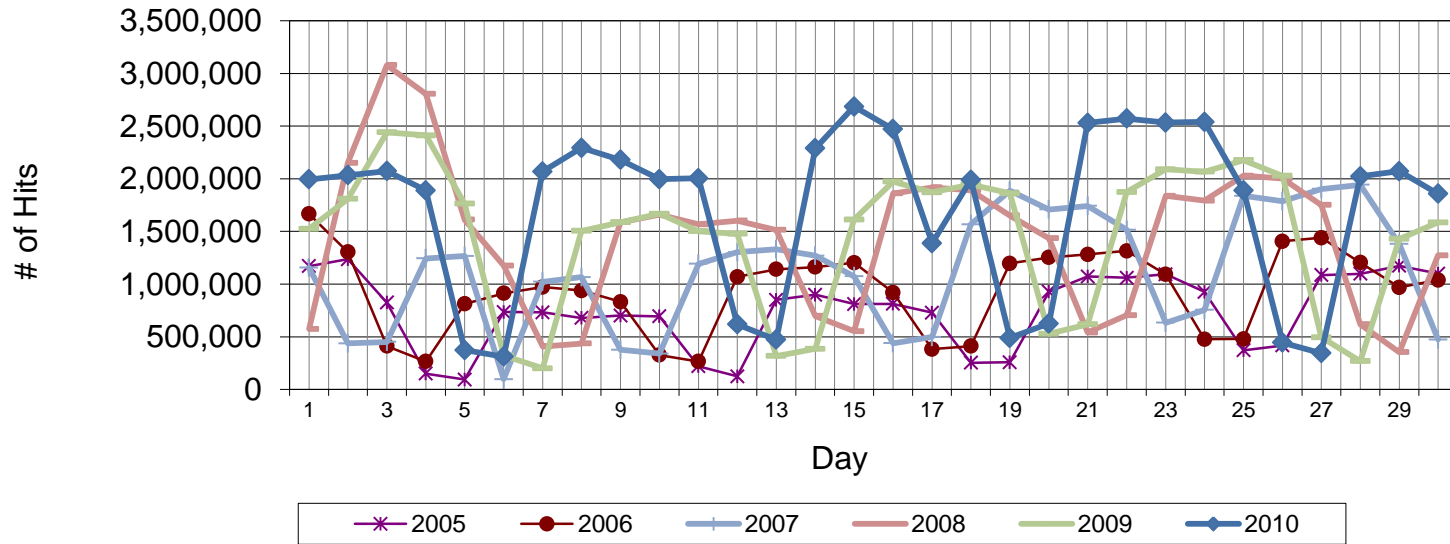


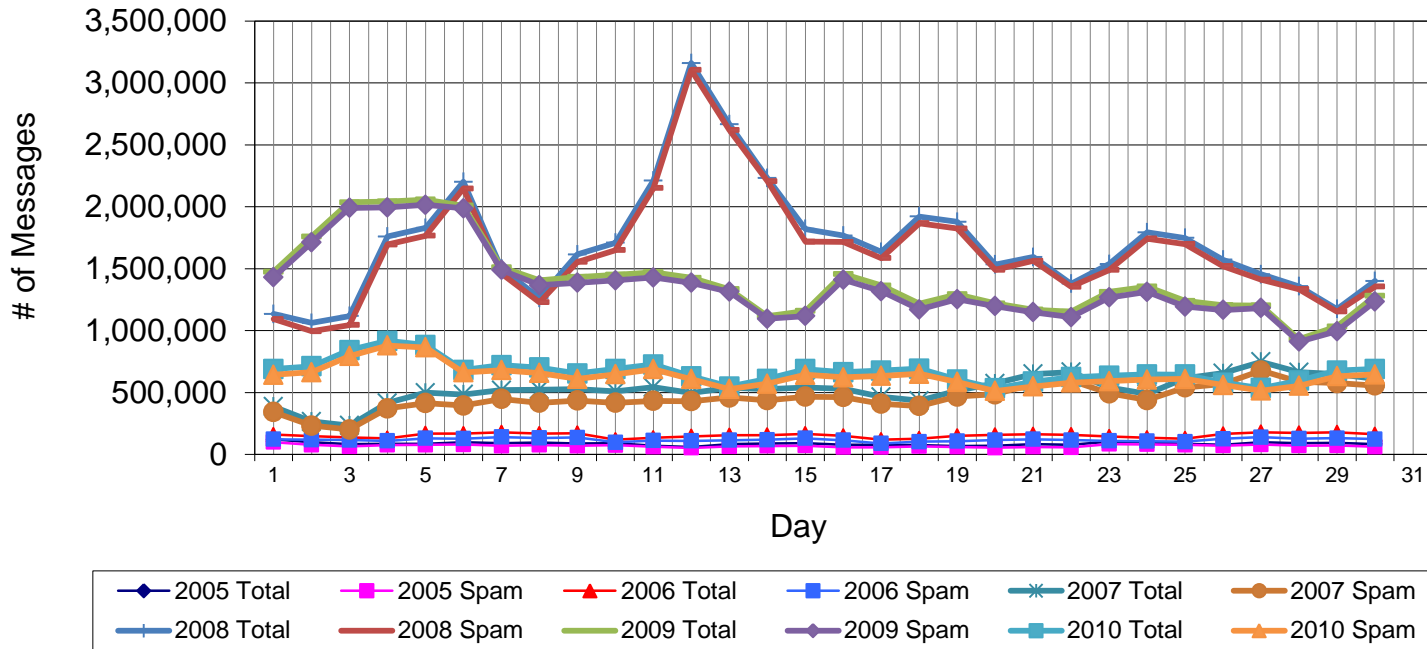
June Web Hits from CedarNet (access to off-campus sites)



The graph shows the number of Internet Web accesses ("hits") made from on-campus computers. Note that fetching a single Web page might produce several hits, depending on the number and type of embedded graphics.

	Total Count	Pct Change One Yr	Pct Change Two Yr
Total Web hits, June 2001 (Spring Quarter ended June 1)	7,322,057		
Total Web hits, June 2002 (Spring Quarter ended May 31)	7,999,745	9.26%	
Total Web hits, June 2003 (Spring Semester ended May 9)	15,182,264	89.78%	107.3%
Total Web hits, June 2004 (Spring Semester ended April 30)	19,644,065	29.39%	145.6%
Total Web hits, June 2005 (Spring Semester ended May 6)	22,295,592	13.50%	46.9%
Total Web hits, June 2006 (May term ended June 2)	28,142,746	26.23%	43.3%
Total Web hits, June 2007 (May term ended May 25)	33,695,339	19.73%	51.1%
Total Web hits, June 2008 (May term ended May 23)	43,080,142	27.85%	53.1%
Total Web hits, June 2009 (May term ended May 22)	43,342,225	0.61%	28.6%
Total Web hits, June 2010 (May term ended May 21)	51,059,351	17.81%	18.5%

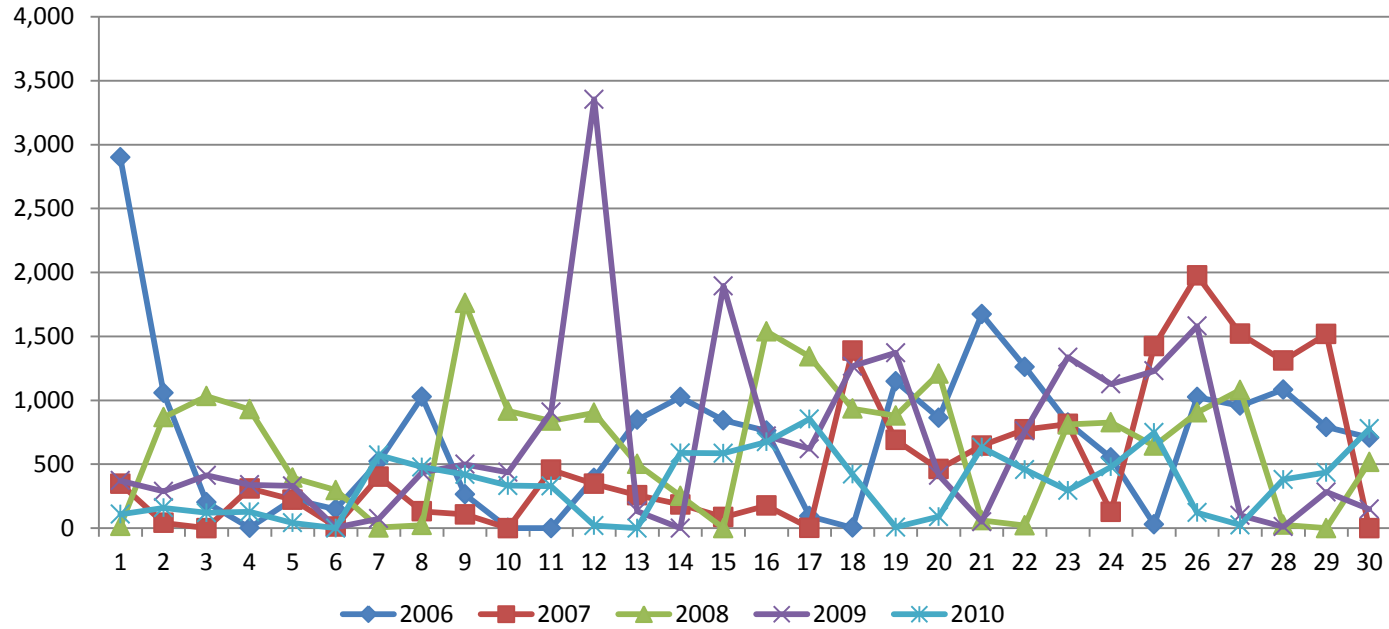
June Incoming Email



Total incoming email volume, June 2010	20,097,992
Total incoming spam blocked, June 2010	19,005,524
Net incoming email, June 2010	1,092,468
Percent email not blocked	5.4%

	Total Count	Pct Change One Yr	Pct Change Two Yr
Total incoming email volume, June 2005	2,617,016		
Total incoming email volume, June 2006	4,616,159	76.4%	
Total incoming email volume, June 2007	15,826,446	242.8%	504.8%
Total incoming email volume, June 2008	51,041,638	222.5%	1005.7%
Total incoming email volume, June 2009	42,137,223	-17.4%	166.2%
Total incoming email volume, June 2010	20,097,992	-52.3%	-60.6%

Pages Printed



	Total Count	Pct Change One Yr	Pct Change Two Yr
Total pages printed June 2006 (May term ended June 2)	21,226		
Total pages printed June 2007 (May term ended May 25)	15,729	-25.9%	
Total pages printed June 2008 (May term ended May 23)	19,533	24.2%	-8.0%
Total pages printed June 2009 (May term ended May 22)	20,494	4.9%	30.3%
Total pages printed June 2010 (May term ended May 21)	10,271	-49.9%	-47.4%