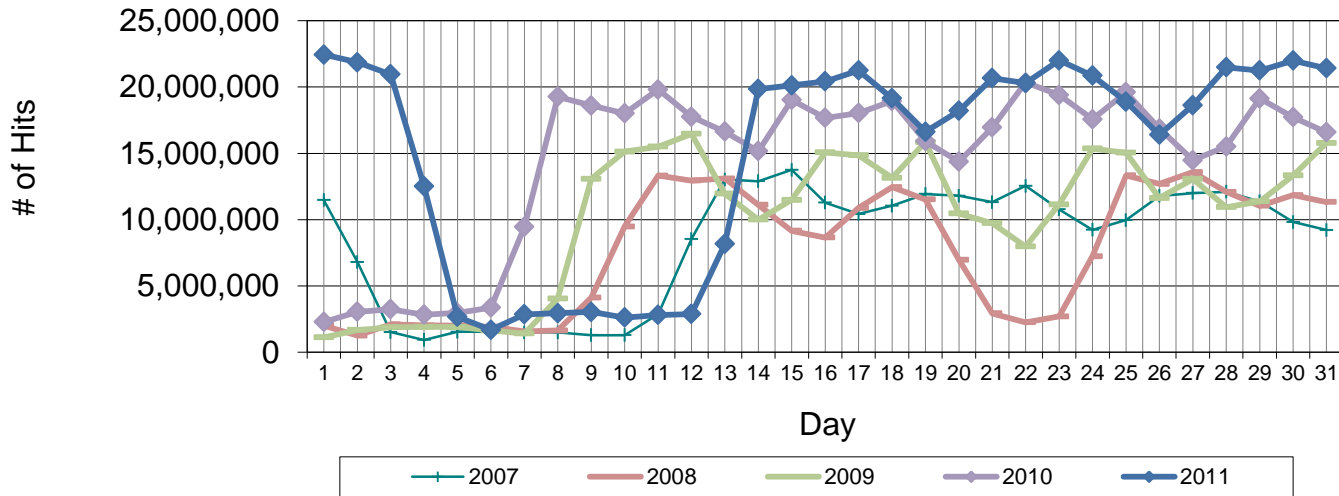


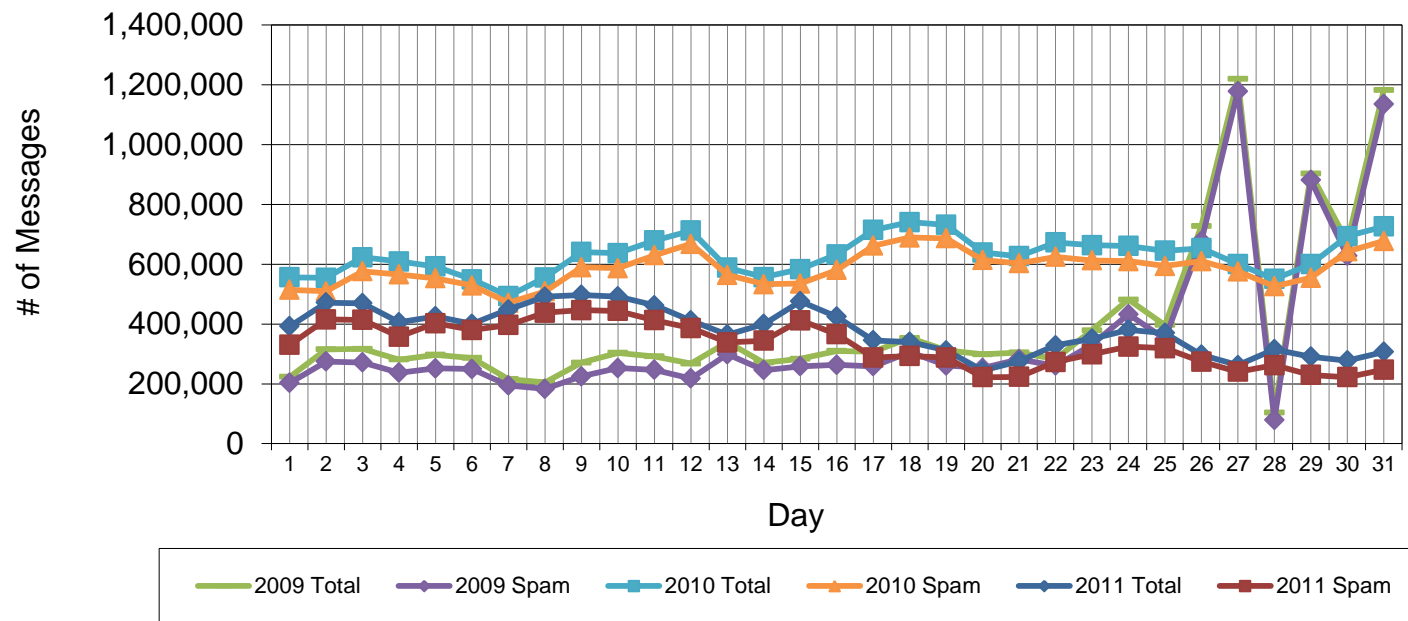
March Web Hits from CedarNet (access to off-campus sites)



The graph shows the number of Internet Web accesses ("hits") made from on-campus computers. Note that fetching a single Web page might produce several hits, depending on the number and type of embedded graphics.

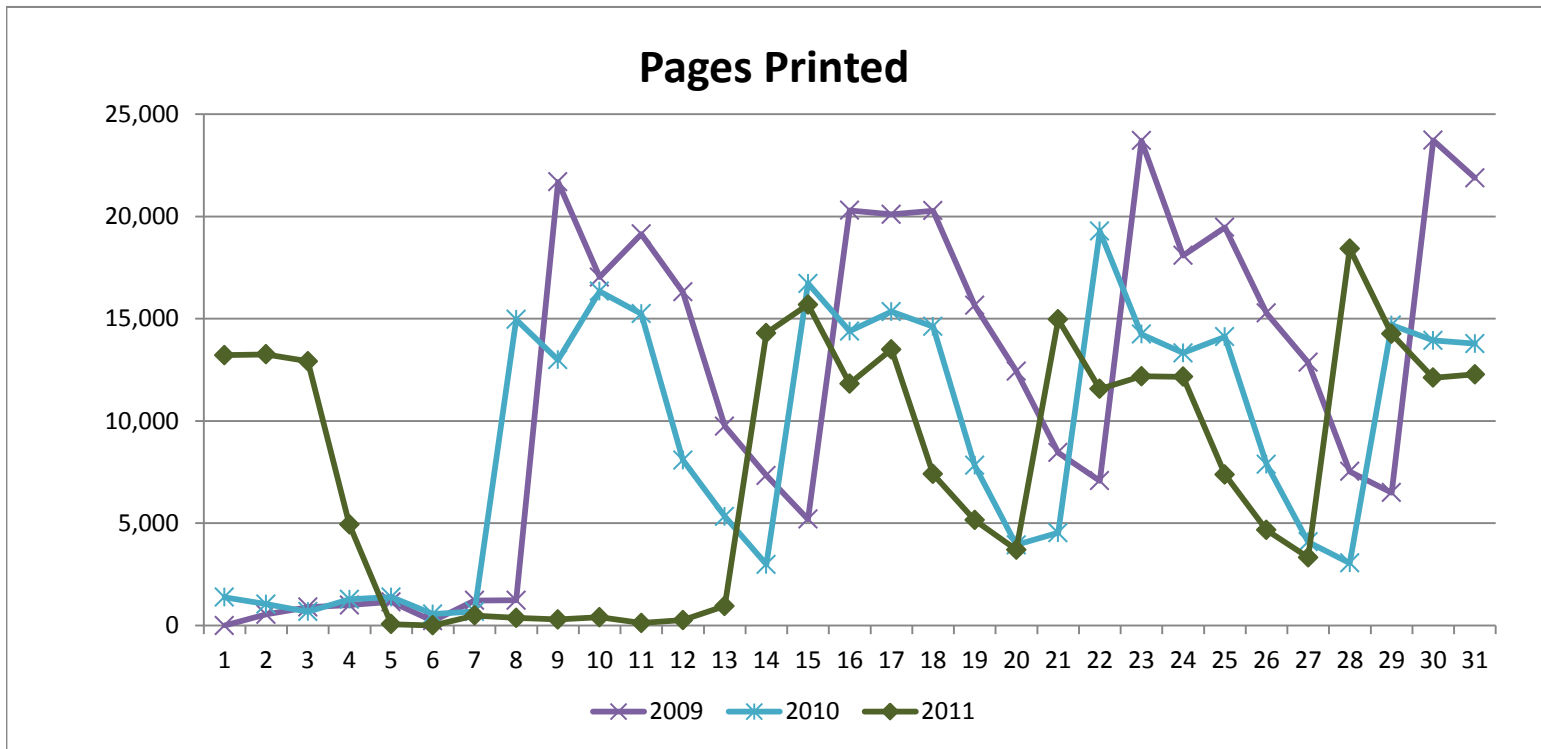
	Total Count	Pct Change	
Total Web hits, March 2001	38,219,611		
Total Web hits, March 2002	45,700,115	19.6%	
Total Web hits, March 2003	90,277,098	97.5%	136.2%
Total Web hits, March 2004	135,656,817	50.3%	196.8%
Total Web hits, March 2005	127,293,889	-6.2%	41.0%
Total Web hits, March 2006	183,808,994	44.4%	35.5%
Total Web hits, March 2007	257,112,349	39.9%	102.0%
Total Web hits, March 2008	239,227,487	-7.0%	30.2%
Total Web hits, March 2009	313,973,508	31.2%	22.1%
Total Web hits, March 2010	450,610,666	43.5%	88.4%
Total Web hits, March 2011	466,966,636	3.6%	48.7%

March Incoming Email



Total incoming email volume, March 2011	11,727,777
Total incoming spam blocked, March 2011	10,290,445
Net incoming email, March 2011	1,437,332
Percent email not blocked	12.3%

	Total Count	Pct Change One Yr	Pct Change Two Yr
Total incoming email volume, March 2005	3,582,101		
Total incoming email volume, March 2006	4,231,335	18.1%	
Total incoming email volume, March 2007	9,748,557	130.4%	172.1%
Total incoming email volume, March 2008	53,309,729	446.8%	1159.9%
Total incoming email volume, March 2009	12,407,654	-76.7%	27.3%
Total incoming email volume, March 2010	19,481,501	57.0%	-63.5%
Total incoming email volume, March 2011	11,727,777	-39.8%	-5.5%



	Total Count	Pct Change One Yr	Pct Change Two Yr
Total pages printed March 2006	263,530		
Total pages printed March 2007	306,292	16.2%	
Total pages printed March 2008	280,080	-8.6%	6.3%
Total pages printed March 2009	356,065	27.1%	16.3%
Total pages printed March 2010	278,739	-21.7%	-0.5%
Total pages printed March 2011	242,183	-13.1%	-32.0%