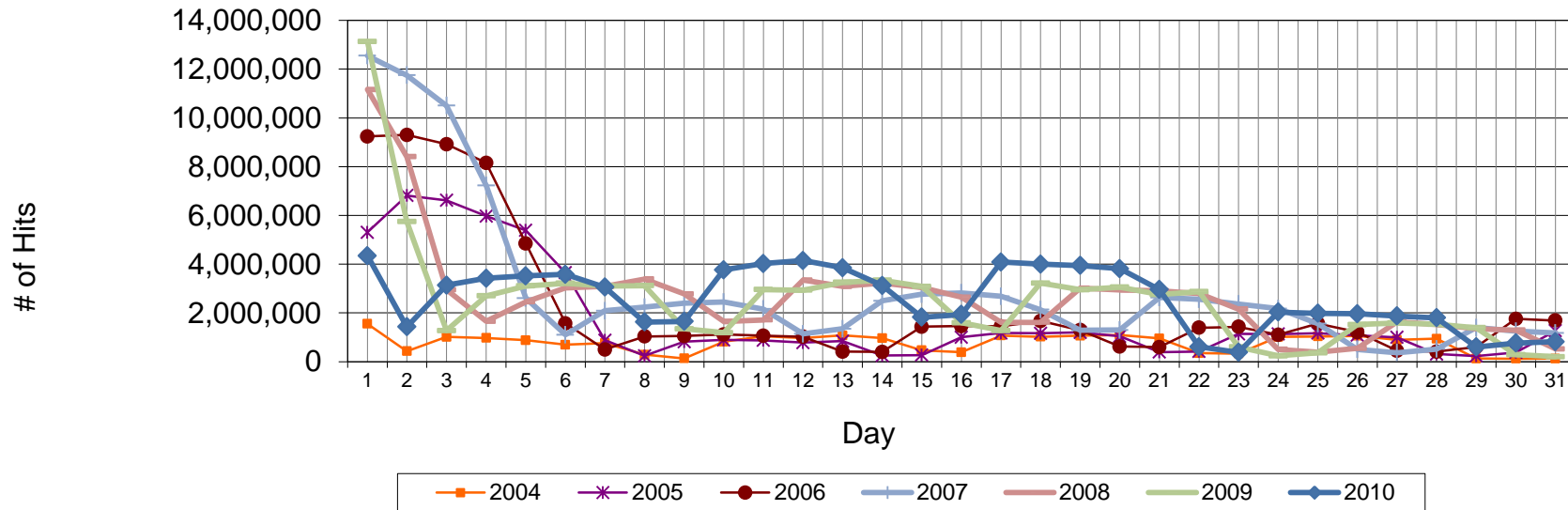


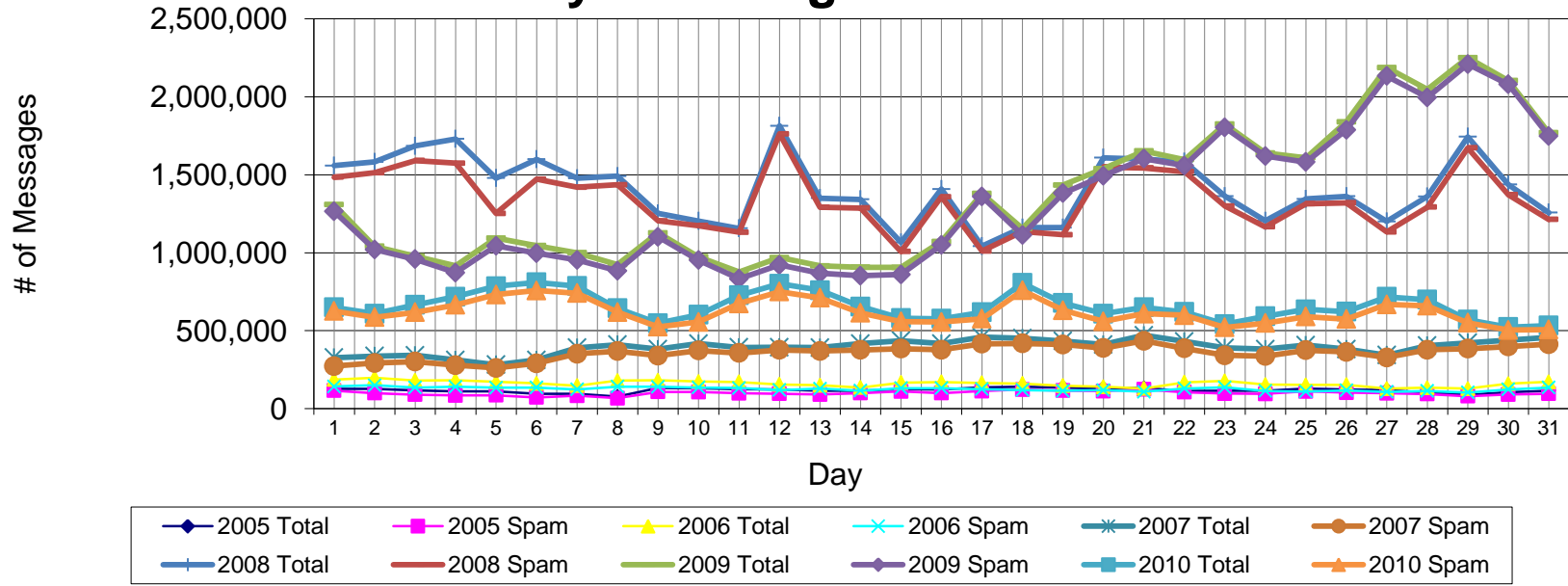
May Web Hits from CedarNet (access to off-campus sites)



The graph shows the number of Internet Web accesses ("hits") made from on-campus computers. Note that fetching a single Web page might produce several hits, depending on the number and type of embedded graphics.

	Total Count	Pct Change One Yr	Pct Change Two Yr
Total Web hits, May 2001 (Spring Quarter ended June 1)	49,982,821		
Total Web hits, May 2002 (Spring Quarter ended May 31)	71,290,383	42.6%	
Total Web hits, May 2003 (Spring Semester ended May 9)	45,457,238	-36.2%	-9.1%
Total Web hits, May 2004 (Spring Semester ended April 30)	23,658,049	-48.0%	-66.8%
Total Web hits, May 2005 (Spring Semester ended May 6)	53,710,896	127.0%	18.2%
Total Web hits, May 2006 (Spring Semester ended May 5)	68,763,138	28.0%	190.7%
Total Web hits, May 2007 (Spring Semester ended May 4)	91,550,386	33.1%	70.5%
Total Web hits, May 2008 (Spring Semester ended May 2)	82,416,970	-10.0%	19.9%
Total Web hits, May 2009 (Spring Semester ended May 1)	78,934,856	-4.2%	-13.8%
Total Web hits, May 2010 (Spring Semester ended April 30)	80,055,150	1.4%	-2.9%

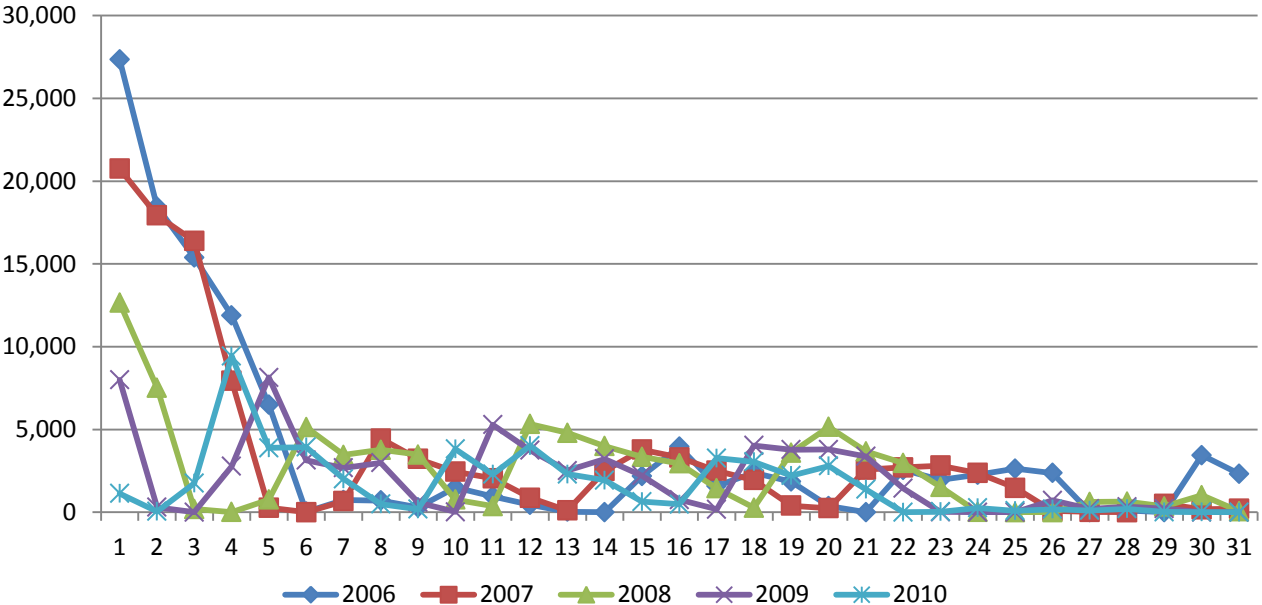
May Incoming Email



Total incoming email volume, May 2010	20,331,388
Total incoming spam blocked, May 2010	19,149,332
Net incoming email, May 2010	1,182,056
Percent email not blocked	5.8%

	Total Count	Pct Change One Yr	Pct Change Two Yr
Total incoming email volume, May 2005	3,657,560		
Total incoming email volume, May 2006	4,994,740	36.6%	
Total incoming email volume, May 2007	12,250,289	145.3%	234.9%
Total incoming email volume, May 2008	43,610,021	256.0%	773.1%
Total incoming email volume, May 2009	42,067,154	-3.5%	243.4%
Total incoming email volume, May 2010	20,331,388	-51.7%	-53.4%

Pages Printed



	Total Count	Pct Change
Total pages printed May 2006	114,275	
Total pages printed May 2007	104,760	-8.3%
Total pages printed May 2008	79,926	-23.7%
Total pages printed May 2009	64,490	-19.3%
Total pages printed May 2010	52,063	-19.3%

]