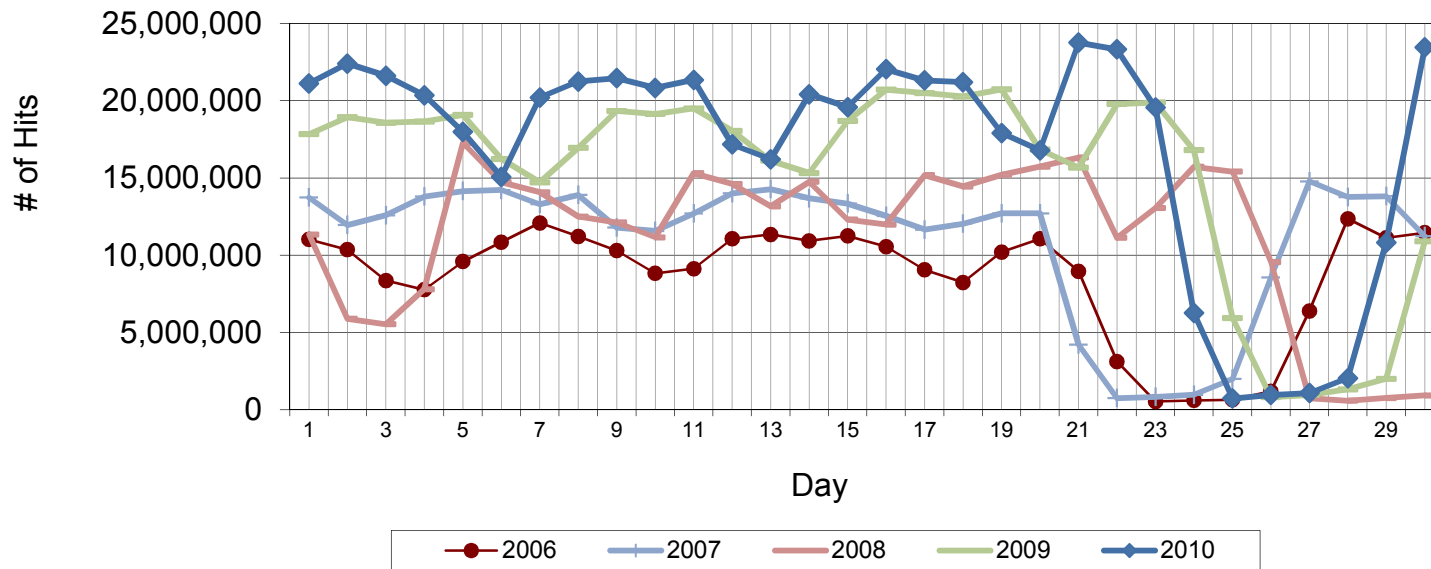


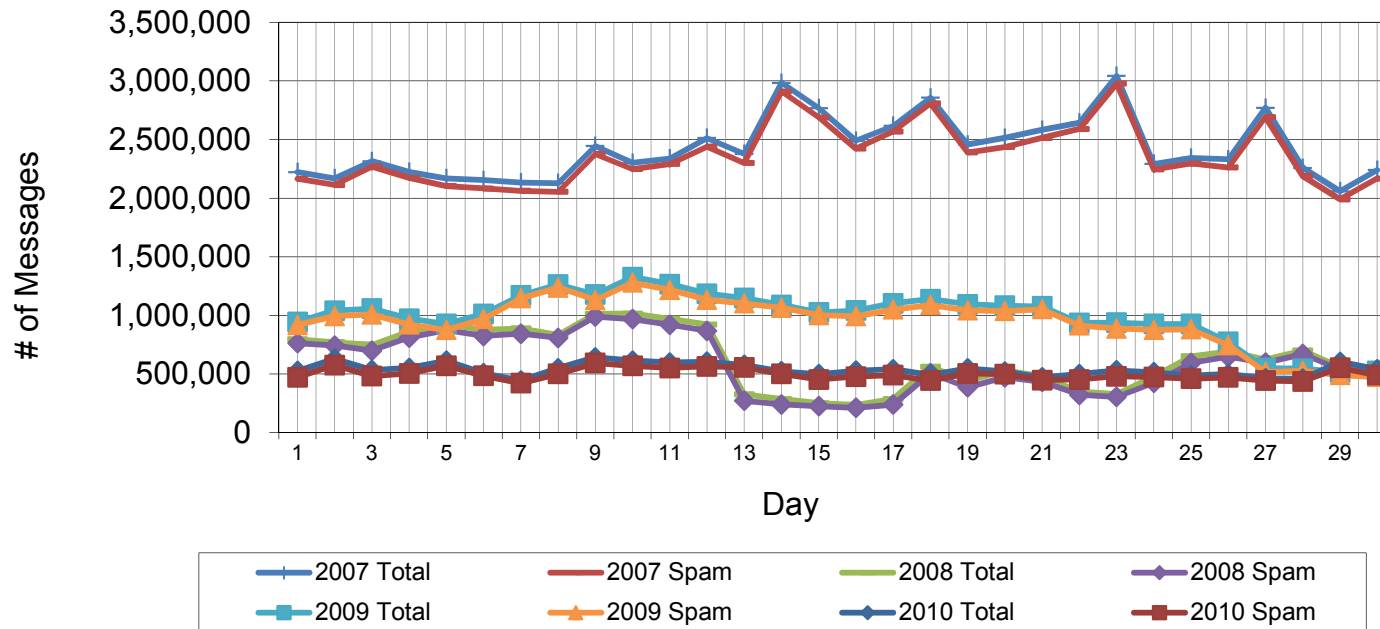
November Web Hits from CedarNet (access to off-campus sites)



The graph shows the number of Internet Web accesses ("hits") made from on-campus computers. Note that fetching a single Web page might produce several hits, depending on the number and type of embedded graphics.

	Total Count	Pct Change One Yr	Pct Change Two Yr
Total Web hits, November 2001	51,316,975		
Total Web hits, November 2002	80,520,043	56.91%	
Total Web hits, November 2003	132,074,065	64.03%	157.37%
Total Web hits, November 2004	157,619,981	19.34%	95.75%
Total Web hits, November 2005	209,700,754	33.04%	58.78%
Total Web hits, November 2006	259,741,824	23.86%	64.79%
Total Web hits, November 2007	331,719,459	27.71%	58.19%
Total Web hits, November 2008	339,484,924	2.34%	30.70%
Total Web hits, November 2009	460,390,788	35.61%	38.79%
Total Web hits, November 2010	508,380,369	10.42%	49.75%

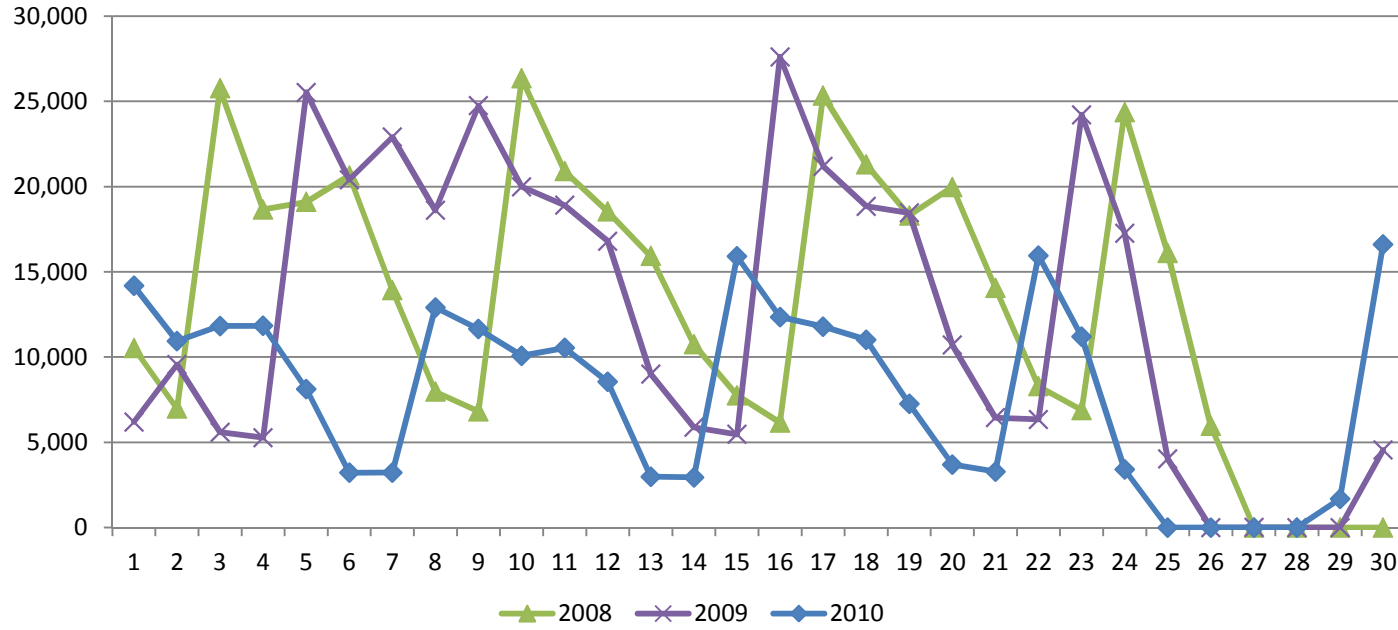
November Incoming Email



Total incoming email volume, November 2010	16,119,284
Total incoming spam blocked, November 2010	14,938,641
Net incoming email, November 2010	1,180,643
Percent email not blocked	7.3%

	Total Count	Pct Change One Yr	Pct Change Two Yr
Total incoming email volume, November 2004	2,898,253		
Total incoming email volume, November 2005	2,272,873	-21.6%	
Total incoming email volume, November 2006	8,099,195	256.3%	179.45%
Total incoming email volume, November 2007	72,733,495	798.0%	3100.07%
Total incoming email volume, November 2008	18,948,678	-73.9%	133.96%
Total incoming email volume, November 2009	29,785,946	57.2%	-59.05%
Total incoming email volume, November 2010	16,119,284	-45.9%	-14.93%

Pages Printed



	Total Count	Pct Change One Yr	Pct Change Two Yr
Total pages printed November 2006	273,098		
Total pages printed November 2007	358,650	31.3%	
Total pages printed November 2008	397,275	10.8%	45.47%
Total pages printed November 2009	374,526	-5.7%	4.43%
Total pages printed November 2010	237,126	-36.7%	-40.31%