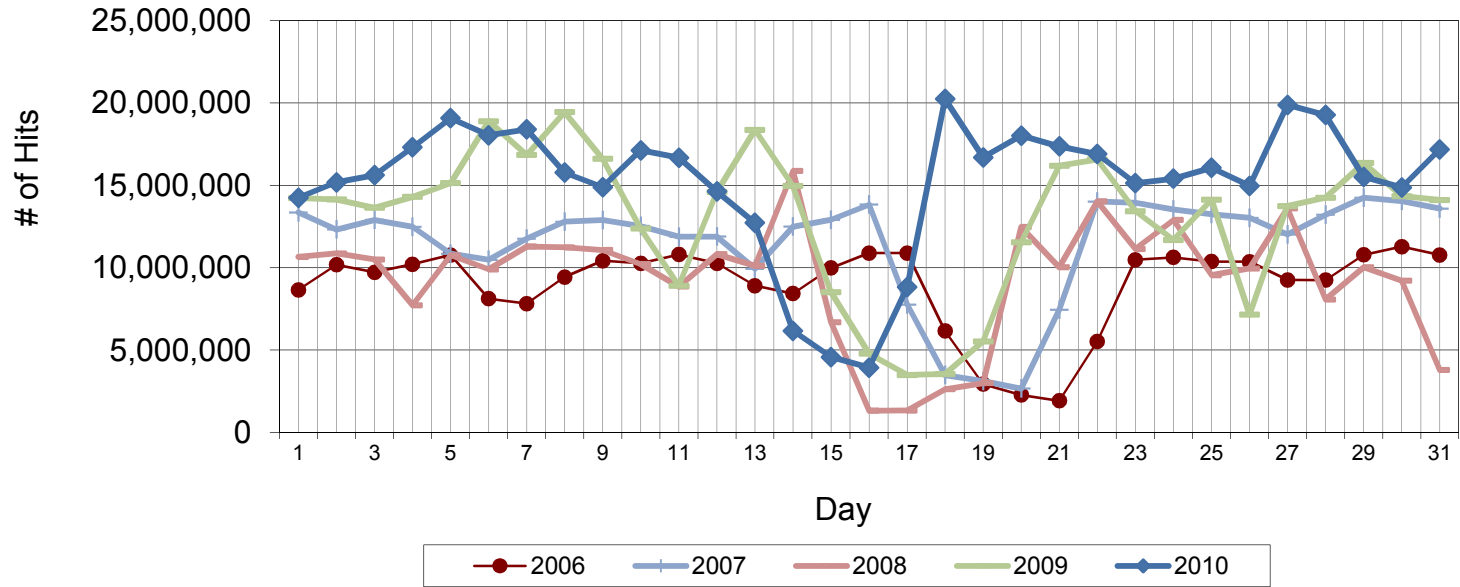


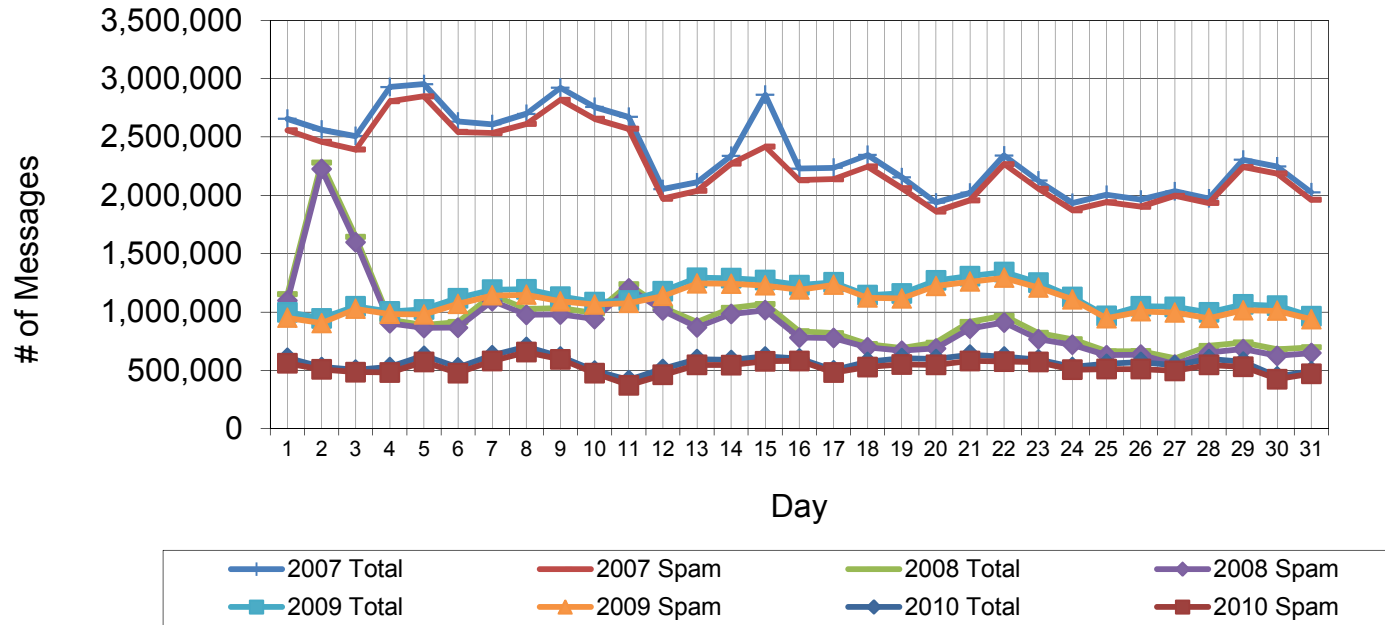
October Web Hits from CedarNet (access to off-campus sites)



The graph shows the number of Internet Web accesses ("hits") made from on-campus computers.
 Note that fetching a single Web page might produce several hits, depending on the number and type of embedded graphics.

	Total Count	Pct Change One Yr	Pct Change Two Yr
Total Web hits, October 2001	59,725,897		
Total Web hits, October 2002	84,490,659	41.46%	
Total Web hits, October 2003	135,090,071	59.89%	126.18%
Total Web hits, October 2004	161,735,775	19.72%	91.42%
Total Web hits, October 2005	205,673,372	27.17%	52.25%
Total Web hits, October 2006	277,756,064	35.05%	71.73%
Total Web hits, October 2007	354,658,675	27.69%	72.44%
Total Web hits, October 2008	289,608,410	-18.34%	4.27%
Total Web hits, October 2009	401,793,203	38.74%	13.29%
Total Web hits, October 2010	470,714,959	17.15%	62.53%

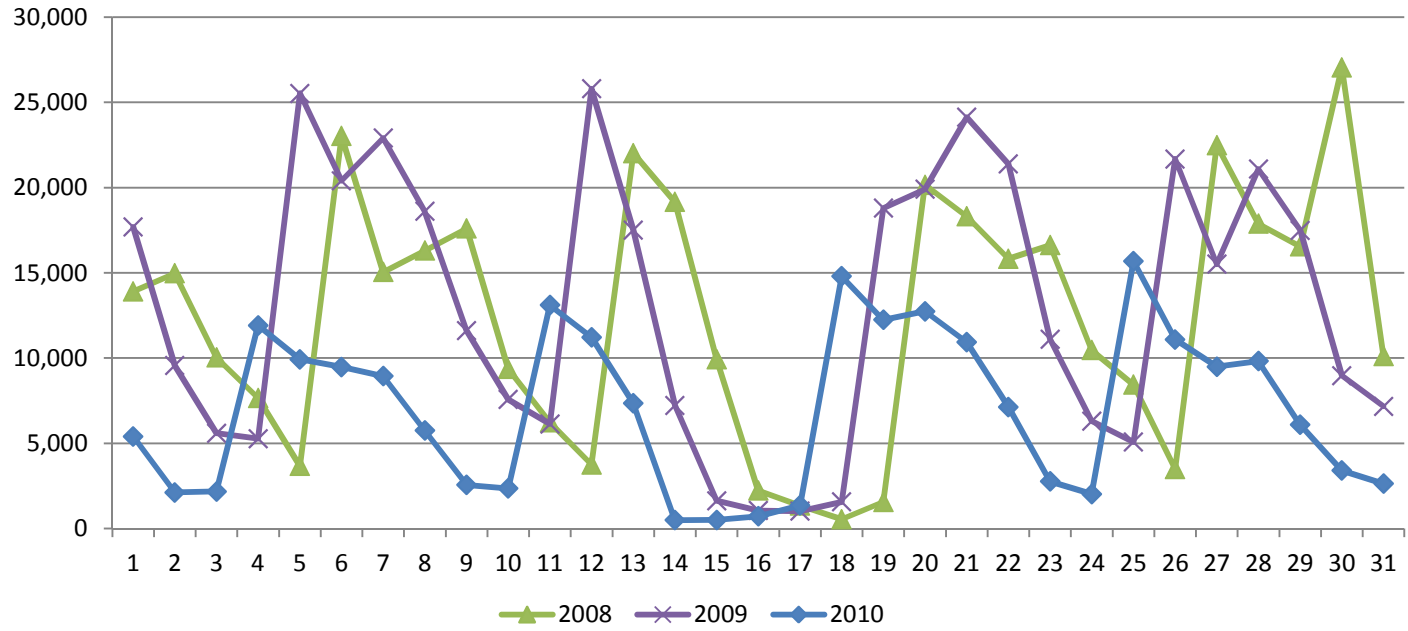
October Incoming Email



Total incoming email volume, October 2010	17,556,445
Total incoming spam blocked, October 2010	16,334,123
Net incoming email, October 2010	1,222,322
Percent email not blocked	7.0%

	Total Count	Pct Change One Yr	Pct Change Two Yr
Total incoming email volume, October 2004	2,797,795		
Total incoming email volume, October 2005	2,536,251	-9.3%	
Total incoming email volume, October 2006	8,436,526	232.64%	201.54%
Total incoming email volume, October 2007	73,136,218	766.90%	2783.63%
Total incoming email volume, October 2008	29,353,527	-59.86%	247.93%
Total incoming email volume, October 2009	35,122,123	19.65%	-51.98%
Total incoming email volume, October 2010	17,556,445	-50.01%	-40.19%

Pages Printed



	Total Count	Pct Change One Yr	Pct Change Two Yr
Total pages printed October 2006	282,688		
Total pages printed October 2007	388,412	37.4%	
Total pages printed October 2008	385,657	-0.71%	36.42%
Total pages printed October 2009	427,229	10.78%	9.99%
Total pages printed October 2010	216,223	-49.39%	-43.93%