

## CHAPTER 2: ENROLLMENT INFORMATION

The information in this section is a natural extension of the University's interest in data concerning entering students. Enrollment affects every aspect of University life and is directly related to institutional quality, both through the mixture of students with various academic achievement levels and through the additional tuition revenues that can be used to improve academic programs. Enrollment data drives the demand for faculty and courses and determines the need for classrooms, library materials, residence hall space, student services, and more.



Highlights include:

- The second largest freshman class (851) led to a total undergraduate enrollment increase to 3,220. Full-time equivalents reversed a four-year trend and rose to an all-time high of 3,014.
- This year's total enrollment includes 90 high school students, enrolled in online college courses, 20 health care professionals in the first cohort of the Master of Science in Nursing program, more than 230 students from diverse ethnic backgrounds, and nearly 160 pharmacy students. The percentage of male students in the undergraduate student body remained at 46 percent, in spite of the addition of the prepharmacy program where 59 percent of the students who were female. This year's freshman class saw a rise in the percentage of male students to 47 percent. Gender diversity trends at the University have typically matched national college enrollment gender distributions, a rarity among most CCCU schools that tend to attract much higher percentages of female students.
- The number of minority students exceeds 7 percent, an all-time high, influenced by continuing strong enrollment of Hispanic students (74), African-American students (49), and international students (46). The number of international students has doubled since 2008.
- The student body includes a representative from 48 of 50 states (none from Montana or North Dakota). The percentage of students from Ohio and its contiguous states (IN, MI, KY, WV, and PA) increased slightly at 61 percent, with 36 percent coming from Ohio and 24 percent from contiguous states.
- The largest cohort of new degree-seeking M.Ed. students were enrolled this fall. Results included 30 applications, 22 accepts (73 percent rate), and 18 enrolled (82 percent rate).
- Nursing remains the single most popular major, enrolling 352 students or 11 percent of the student body. Biology remains among the most popular majors, attracting 94 in the B.S. program and an additional 51 in the B.A. program. The six majors enrolling the most students include:

Nursing	352
Mechanical Engineering	220
Prepharmacy	159
Early Childhood Education	141
Psychology	132
Biology (B.S.)	94

- The college of arts and sciences serves the largest number of students, 1,191 or 37 percent of the undergraduate student body. The college of professions serves 1,165, and the college of health professions serves 905. The six largest departments include:

Engineering and Computer Science	393
Nursing	352
Science and Mathematics	323
Business Administration	301
History and Government	253
Media and Applied Communications	243

## Total Undergraduate Headcount Enrollment

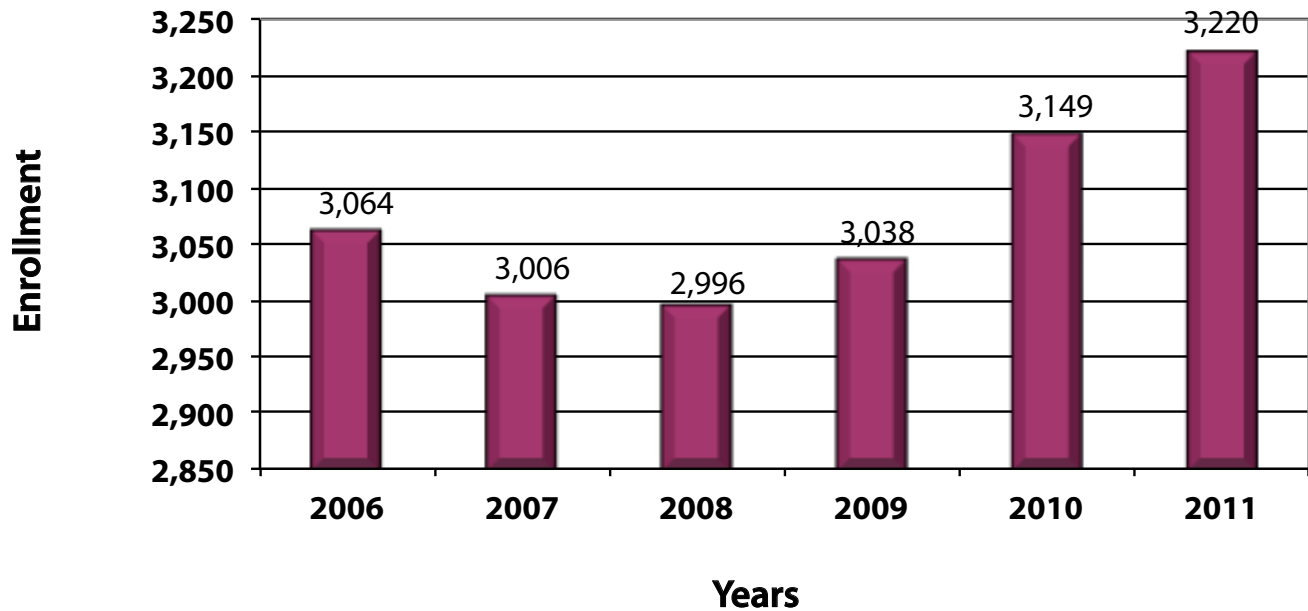


Chart 2.1  
Source: Office of the Registrar

## Total Undergraduate Headcount Enrollment by Student Level

	2007		2008		2009		2010		2011	
<b>Freshmen</b>	846	28.14%	856	28.57%	803	26.43%	951	30.20%	946	29.38%
<b>Sophomores</b>	698	23.22%	646	21.56%	669	22.02%	684	21.72%	761	23.63%
<b>Juniors</b>	661	21.99%	641	21.40%	643	21.17%	605	19.21%	635	19.72%
<b>Seniors</b>	745	24.78%	796	26.57%	810	26.66%	805	25.56%	769	23.88%
<b>Special</b>	56	1.86%	57	1.90%	113	3.72%	104	3.30%	109	3.39%
<b>TOTAL</b>	<b>3,006</b>		<b>2,996</b>		<b>3,038</b>		<b>3,149</b>		<b>3,220</b>	

Chart 2.2  
Source: Office of the Registrar

## Full-Time Equivalent Students

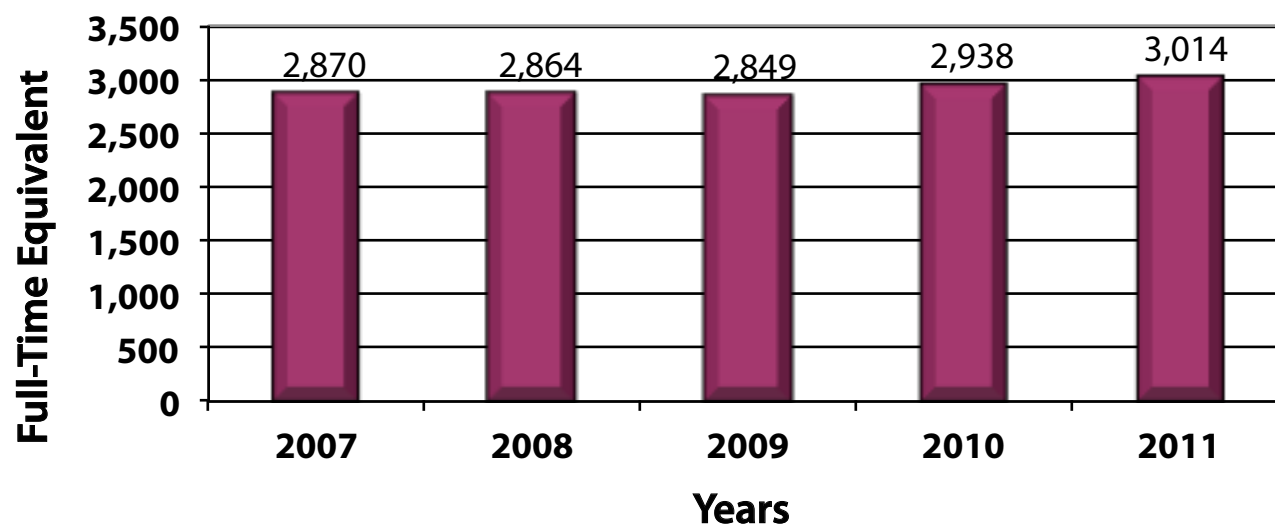


Chart 2.3  
Source: Office of the Registrar

## Enrollment by Gender, Marital Status, and Transfer Students

	2007	2008	2009	2010	2011
<b>Men</b>	1,345	1,366	1,388	1,455	1,494
<b>Women</b>	1,661	1,630	1,650	1,694	1,726
<b>Married Students</b>	100	97	90	93	87
<b>Transfer Students</b>	113	84	97	102	98

Chart 2.4  
Source: Office of the Registrar

## Race/Ethnicity of Full-Time and Part-Time Undergraduate Students

	2007	2008	2009	2010	2011
American Indian or Alaskan Native	8	10	9	8	10
Asian	N/A	N/A	N/A	33	34
Asian or Pacific Islander	35	39	37	N/A	N/A
Black/Non-Hispanic	41	47	45	54	49
Hawaiian/Pacific Islander	N/A	N/A	N/A	2	2
Hispanic	58	66	80	75	74
Two or More Races	N/A	N/A	N/A	7	15
Non-resident Alien	22	23	35	42	46
<b>TOTAL</b>	<b>164</b>	<b>185</b>	<b>206</b>	<b>221</b>	<b>230</b>
<b>PERCENT OF TOTAL ENROLLMENT</b>	<b>5.46%</b>	<b>6.17%</b>	<b>6.78%</b>	<b>7.02%</b>	<b>7.14%</b>
<b>TOTAL ENROLLMENT</b>	<b>3,006</b>	<b>2,996</b>	<b>3,038</b>	<b>3,149</b>	<b>3,220</b>

Chart 2.5

Source: Office of the Registrar

## Student Body Church Affiliation

	2007		2008		2009		2010		2011	
Bible Churches	299	9.95%	345	11.52%	300	9.87%	306	9.72%	232	7.20%
Baptist — GARBC	440	14.64%	409	13.65%	379	12.48%	356	11.31%	339	10.53%
Baptist — Independent	402	13.37%	363	12.12%	376	12.38%	424	13.46%	374	11.61%
Baptist — Southern	279	9.28%	294	9.81%	326	10.73%	350	11.11%	349	10.84%
Baptist — Other (including Unknown)	424	14.11%	435	14.52%	436	14.35%	390	12.38%	415	12.89%
Brethren (includes Grace Brethren)	76	2.53%	72	2.40%	64	2.11%	80	2.54%	75	2.33%
Christian and Missionary Alliance	77	2.56%	76	2.54%	83	2.73%	94	2.99%	94	2.92%
Evangelical Free	102	3.39%	98	3.27%	100	3.29%	132	4.19%	134	4.16%
Methodist	56	1.86%	63	2.10%	63	2.07%	56	1.78%	62	1.93%
Non-denominational (Independent)	491	16.33%	461	15.39%	507	16.69%	480	15.24%	541	16.80%
Presbyterian	79	2.63%	78	2.60%	103	3.39%	113	3.59%	121	3.76%
Other Denominations	281	9.35%	302	10.08%	301	9.91%	368	11.69%	484	15.03%
<b>TOTALS</b>	<b>3,006</b>	<b>100%</b>	<b>2,996</b>	<b>100%</b>	<b>3,038</b>	<b>100%</b>	<b>3,149</b>	<b>100%</b>	<b>3,220</b>	<b>100%</b>

Chart 2.6

Source: Church Relations

## Enrollment by States and Territories

(continued on next page)

State	Men	Women	TOTAL	State	Men	Women	TOTAL
Alabama	1	3	4	New Hampshire	24	21	45
Alaska	2	4	6	New Jersey	33	46	79
Arizona	1	3	4	New Mexico	1	2	3
Arkansas	2	2	4	New York	74	65	139
California	16	21	37	North Carolina	20	13	33
Colorado	16	24	40	North Dakota	0	0	0
Connecticut	19	13	32	Ohio	513	652	1,165
Delaware	5	10	15	Oklahoma	2	2	4
Florida	11	36	47	Oregon	8	10	18
Georgia	8	10	18	Pennsylvania	150	165	315
Hawaii	1	0	1	Rhode Island	3	4	7
Idaho	3	2	5	South Carolina	6	7	13
Illinois	53	59	112	South Dakota	2	3	5
Indiana	73	80	153	Tennessee	11	13	24
Iowa	17	23	40	Texas	11	20	31
Kansas	8	7	15	Utah	5	1	6
Kentucky	23	24	47	Vermont	12	9	21
Louisiana	1	2	3	Virginia	35	44	79
Maine	30	20	50	Washington	16	8	24
Maryland	35	39	74	West Virginia	18	20	38
Massachusetts	17	22	39	Wisconsin	37	32	69
Michigan	112	119	231	Wyoming	2	2	4
Minnesota	11	19	30	District of Columbia	0	0	0
Mississippi	1	0	1	Guam	0	1	1
Missouri	15	7	22	Puerto Rico	0	0	0
Montana	0	0	0	Virgin Islands	0	0	0
Nebraska	4	5	9	SUBTOTAL	1,471	1,695	3,166
Nevada	3	1	4	Foreign	23	31	54
				TOTAL	1,494	1,726	3,220

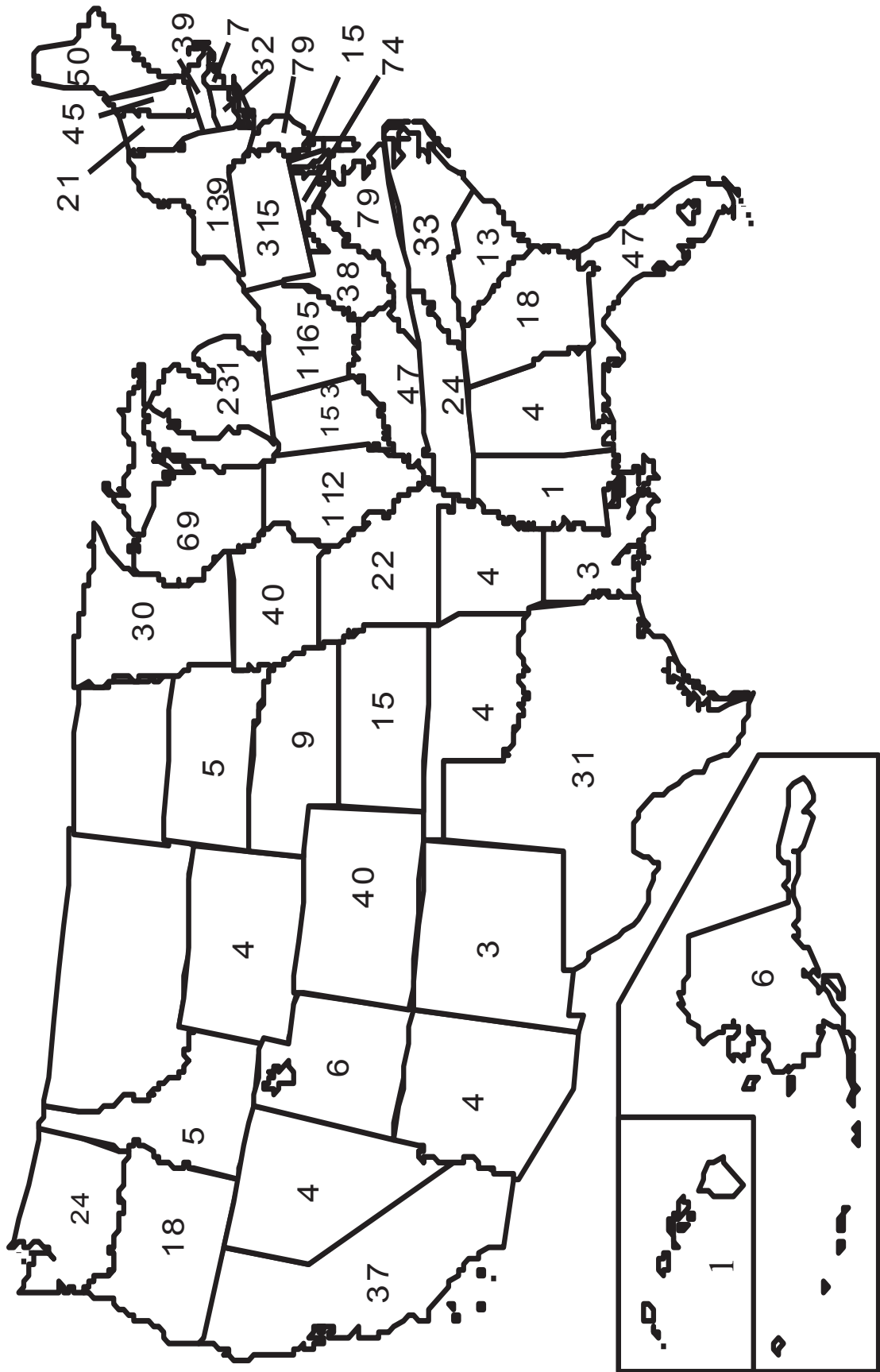


Chart 2.7  
Source: Office of the Registrar

## Top Five Declared Majors

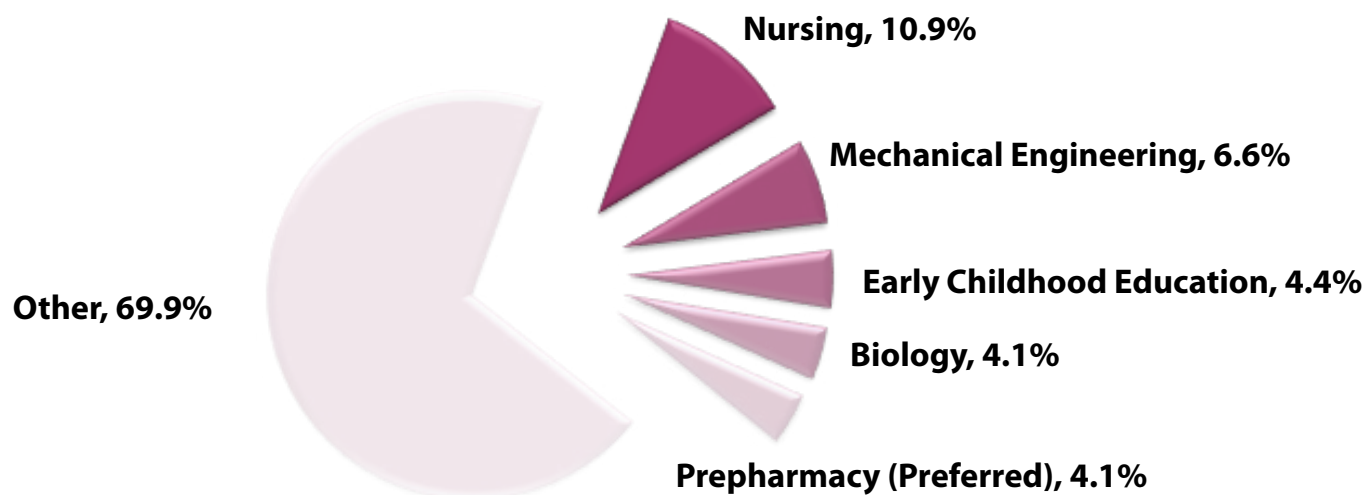


Chart 2.8  
Source: Office of the Registrar

## Top Five Declared Majors by Gender

	2007	2008	2009	2010	2011
<b>Male</b>					
Biology		78	69	67	63
Electrical Engineering					66
Electronic Media Technology/ Broadcasting and Digital Media	72	69	72	79	73
Finance	61	73	68	67	58
Management	77	67	59		
Mechanical Engineering	171	190	187	197	195
Youth Ministries	57			59	
<b>Female</b>					
Biology		98	88	87	
Communication Arts	102				
Early Childhood Education	164	156	150	161	133
Nursing	327	320	317	315	346
Prepharmacy (Preferred)					75
Psychology	76	80	67	99	98
Social Work	80	79	75	63	81

Chart 2.9  
Source: Office of the Registrar

## Enrollment for Individual Studies and Undeclared Students

	2007	2008	2009	2010	2011
Individual Studies	2	0	0	0	0
Undeclared	171	162	223	235	220
TOTAL	173	162	223	235	220

Chart 2.10

Source: Office of the Registrar

## Enrollment by College and Department

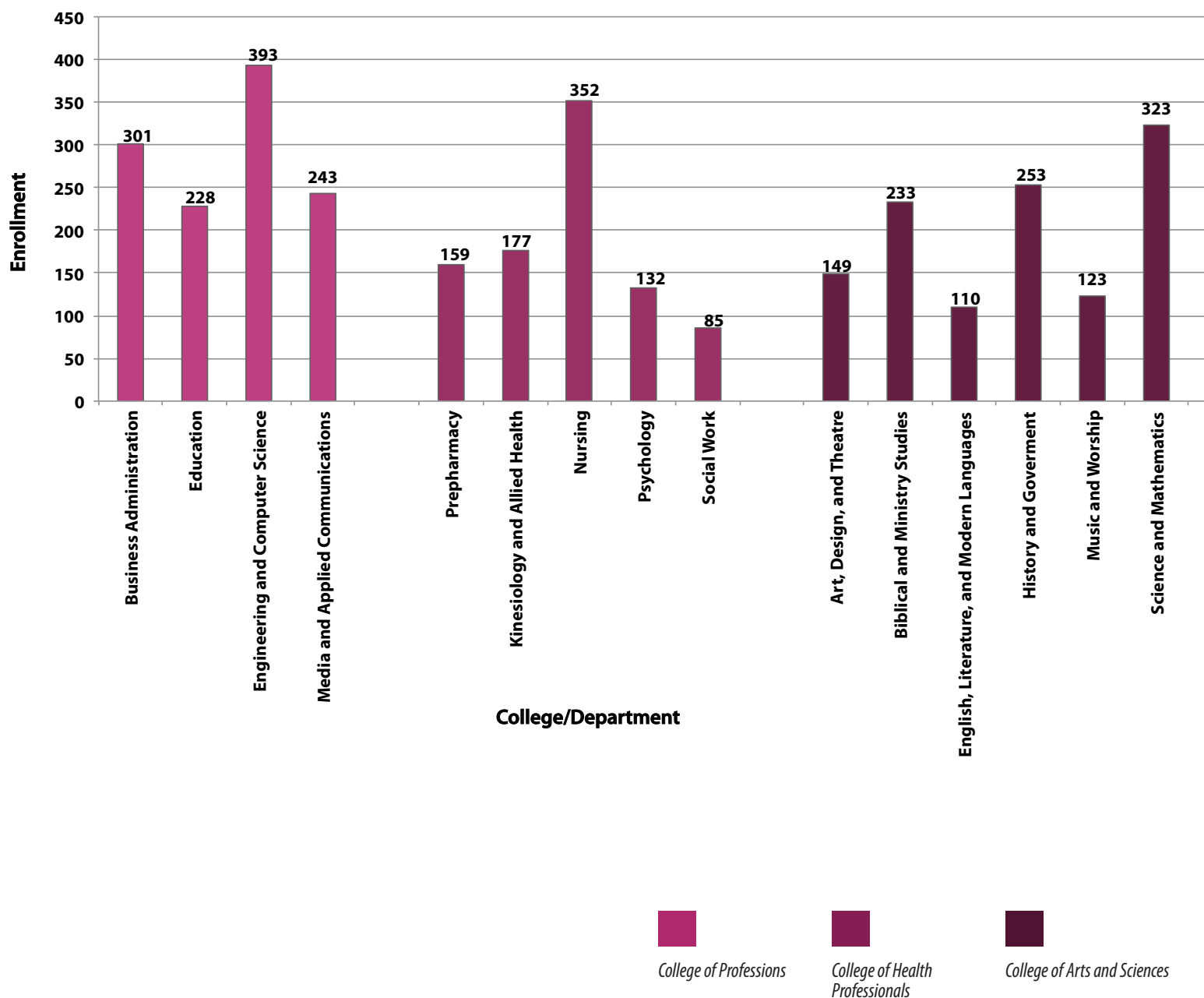


Chart 2.11

Source: Office of the Registrar

NOTE: Effective July 1, 2011, all schools were restructured. This chart reflects the name of each new school and the departments that now reside within that school.

## Enrollment by Department for College of Arts and Sciences

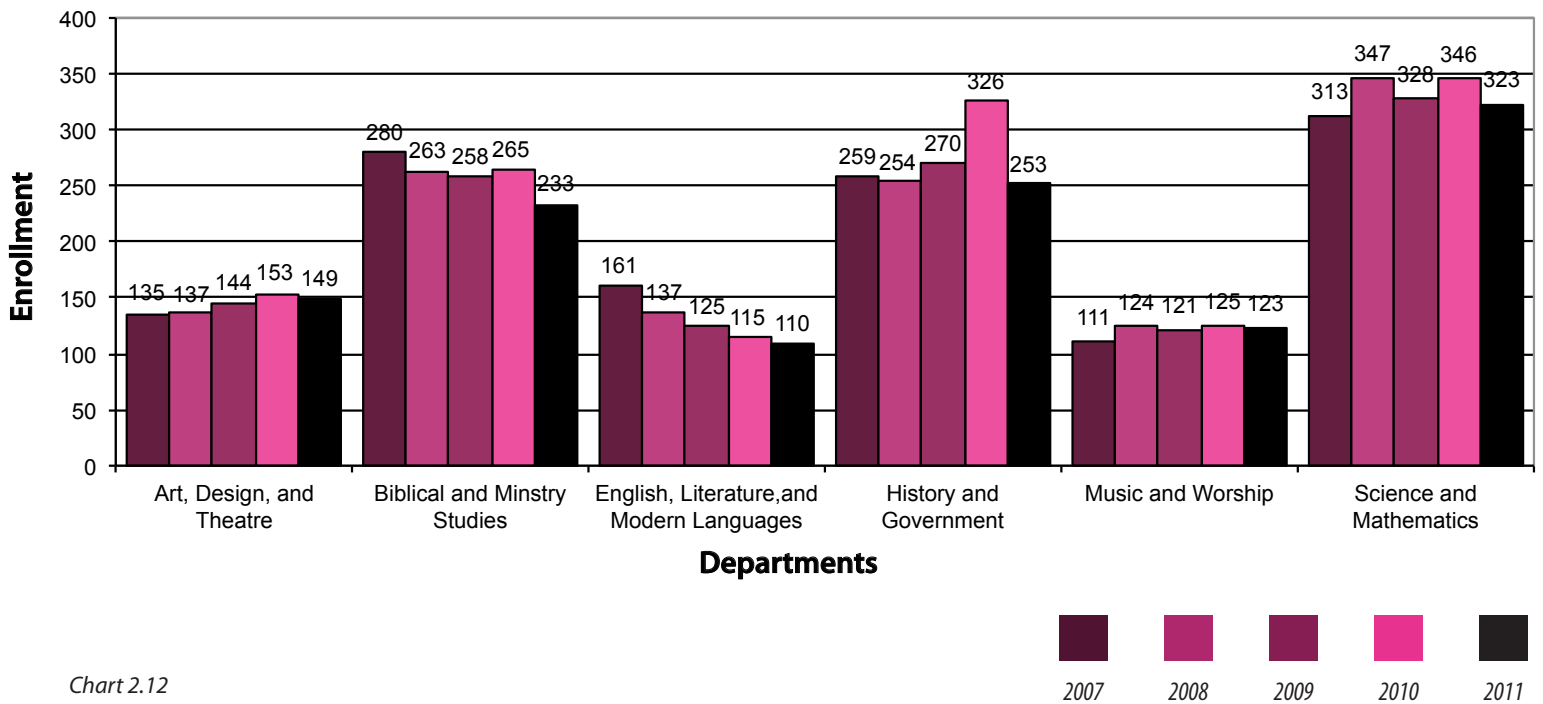


Chart 2.12  
Source: Office of the Registrar

## Enrollment by Major for College of Arts and Sciences

	2007	2008	2009	2010	2011
<b>DEPARTMENT OF ART, DESIGN, AND THEATRE</b>					
Graphic Design	73	78	90	92	80
Industrial and Innovative Design	N/A	N/A	N/A	N/A	24
Studio Art	23	24	20	29	33
Theatre	39	35	34	32	12
<b>TOTAL ART, DESIGN, AND THEATRE</b>	<b>135</b>	<b>137</b>	<b>144</b>	<b>153</b>	<b>149</b>
<b>DEPARTMENT OF BIBLICAL AND MINISTRY STUDIES</b>					
Bible Certificate	2	3	1	4	1
Bible Comprehensive	27	31	29	24	33
Bible Preseminary	58	46	49	47	42
Bible Teacher Education	10	6	7	5	6
Christian Education	35	38	37	45	34
International Studies — Missiology	32	36	32	31	23
Pastoral Studies	23	20	14	13	15
Philosophy	12	19	15	16	11
World Missions	1	N/A	N/A	N/A	N/A
Youth Ministries	80	64	74	80	68
<b>TOTAL BIBLICAL AND MINISTRY STUDIES</b>	<b>280</b>	<b>263</b>	<b>258</b>	<b>265</b>	<b>233</b>

Chart 2.13  
Source: Office of the Registrar

NOTE: Effective July 1, 2011, the college of arts and sciences was created to include the departments of art, design, and theatre; biblical and ministry studies; English, literature, and modern language; history and government; music and worship; and science and mathematics. All corresponding majors and historical enrollment counts were relocated to correspond to new organizational structure.

DEPARTMENT OF ENGLISH, LITERATURE, AND MODERN LANGUAGES					
English	85	58	47	49	42
Language Arts Education — Integrated	35	33	33	29	28
Spanish	29	31	35	31	29
Spanish Education — Multi-Age	12	15	10	6	11
<b>TOTAL ENGLISH, LITERATURE, AND MODERN LANGUAGES</b>	<b>161</b>	<b>137</b>	<b>125</b>	<b>115</b>	<b>110</b>
DEPARTMENT OF HISTORY AND GOVERNMENT					
American Studies	4	5	2	0	0
Criminal Justice	54	51	63	60	62
History	35	36	43	37	34
History/Political Science	19	29	27	37	25
International Studies — Social Science	39	39	38	32	38
Political Science	31	18	17	20	36
Prelaw	16	21	22	29	19
Public Administration	7	11	12	15	14
Social Studies Education — Integrated	38	34	35	30	17
Sociology	16	10	11	11	8
<b>TOTAL HISTORY AND GOVERNMENT</b>	<b>259</b>	<b>254</b>	<b>270</b>	<b>271</b>	<b>253</b>
DEPARTMENT OF MUSIC AND WORSHIP					
Church Music Ministry	16	13	5	5	5
Music	20	19	21	18	17
Music Composition	4	4	3	3	5
Music Education — Multi-Age	37	34	34	32	31
Music — Keyboard Pedagogy	11	12	8	9	10
Music Performance	23	24	22	19	10
Worship		18	28	39	45
<b>TOTAL MUSIC AND WORSHIP</b>	<b>111</b>	<b>124</b>	<b>121</b>	<b>125</b>	<b>123</b>
DEPARTMENT OF SCIENCE AND MATHEMATICS					
Biology — B.A.	53	57	48	51	38
Biology — B.S.	106	119	109	103	94
Chemistry — B.A.	7	6	7	6	6
Chemistry — B.S.	44	50	44	37	31
Chemistry Education		1	3	7	2
Environmental Science		4	10	11	16
Forensic Science	7	9	10	9	17
Geology	N/A	N/A	10	15	18
Geosciences	N/A	N/A	N/A	N/A	2
Life Science Education	10	7	7	6	8
Mathematics — B.A.	10	11	8	15	21
Mathematics — B.S.	19	27	22	20	12
Mathematics Education — Integrated	21	19	24	27	18
Molecular and Cellular Biology	14	14	14	20	23
Physical Science Education	4	4	2	2	0
Physics — B.A.	9	3	0	3	5
Physics — B.S.	8	11	8	11	10
Physics Education	0	3	2	2	1
Science Comprehensive Education — Integrated	1	2	0	1	1
<b>TOTAL SCIENCE AND MATHEMATICS</b>	<b>313</b>	<b>347</b>	<b>328</b>	<b>346</b>	<b>323</b>
<b>TOTAL COLLEGE OF ARTS AND SCIENCES</b>	<b>965</b>	<b>942</b>	<b>940</b>	<b>857</b>	<b>880</b>

## Enrollment by Department for College of Professions

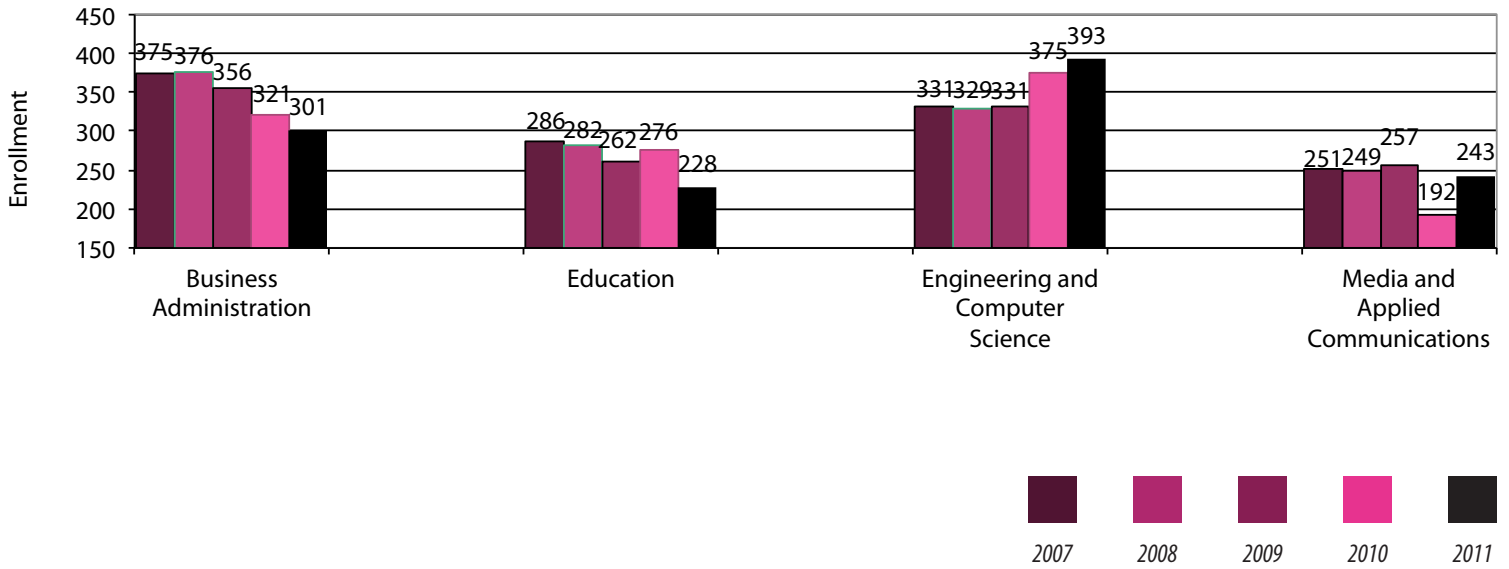


Chart 2.14

Source: Office of the Registrar

NOTE: Effective July 1, 2011, the college of professions was created to include the departments of business administration, education, and engineering and computer science, and the reformatted department of media and applied communications. All corresponding majors and historical enrollment counts were relocated to correspond to new organizational structure.

## Enrollment by Major for College of Professions

	2007	2008	2009	2010	2011
<b>DEPARTMENT OF BUSINESS ADMINISTRATION</b>					
Accounting	71	82	85	73	56
Finance	84	89	85	81	67
Global Economics and International Business	21	34	28	23	28
Information Systems	19	22	22	21	21
Management	101	99	80	62	65
Marketing	79	50	56	61	64
<b>TOTAL BUSINESS ADMINISTRATION</b>	<b>375</b>	<b>376</b>	<b>356</b>	<b>321</b>	<b>301</b>
<b>DEPARTMENT OF EDUCATION</b>					
Early Childhood Education	173	167	160	173	141
Middle Childhood Education	71	71	43	61	53
Special Education — Intervention Specialist	42	44	59	42	34
<b>TOTAL EDUCATION</b>	<b>286</b>	<b>282</b>	<b>262</b>	<b>276</b>	<b>228</b>
<b>DEPARTMENT OF ENGINEERING AND COMPUTER SCIENCE</b>					
Computer Engineering	38	33	41	44	47
Computer Science	53	42	34	49	59
Electrical Engineering	56	48	51	62	74
Mechanical Engineering	184	206	205	220	213
<b>TOTAL ENGINEERING AND COMPUTER SCIENCE</b>	<b>331</b>	<b>329</b>	<b>331</b>	<b>375</b>	<b>393</b>
<b>DEPARTMENT OF MEDIA AND APPLIED COMMUNICATIONS</b>					
Broadcasting and Digital Media	N/A	N/A	N/A	30	61
Communication Studies	143	101	61	23	1
Comprehensive Communication	N/A	8	21	36	40
Electronic Media Technology	90	93	96	7	36
Intercultural Communication	N/A	3	7	9	7
Journalism	N/A	11	23	18	19
Media Communication	N/A	2	3	8	12
Multimedia Technologies	N/A	N/A	N/A	N/A	
Organizational Communication	N/A	2	14	30	31
Political Communication	N/A	3	4	6	6
Technical and Professional Communication	18	26	28	25	30
<b>TOTAL MEDIA AND APPLIED COMMUNICATIONS</b>	<b>251</b>	<b>249</b>	<b>257</b>	<b>192</b>	<b>243</b>
<b>TOTAL COLLEGE OF PROFESSIONS</b>	<b>1,243</b>	<b>1,236</b>	<b>1,206</b>	<b>1,164</b>	<b>1,165</b>

Chart 2.17

Source: Office of the Registrar

NOTE: N/A = Major not available

## Enrollment by Department for College of Health Professions

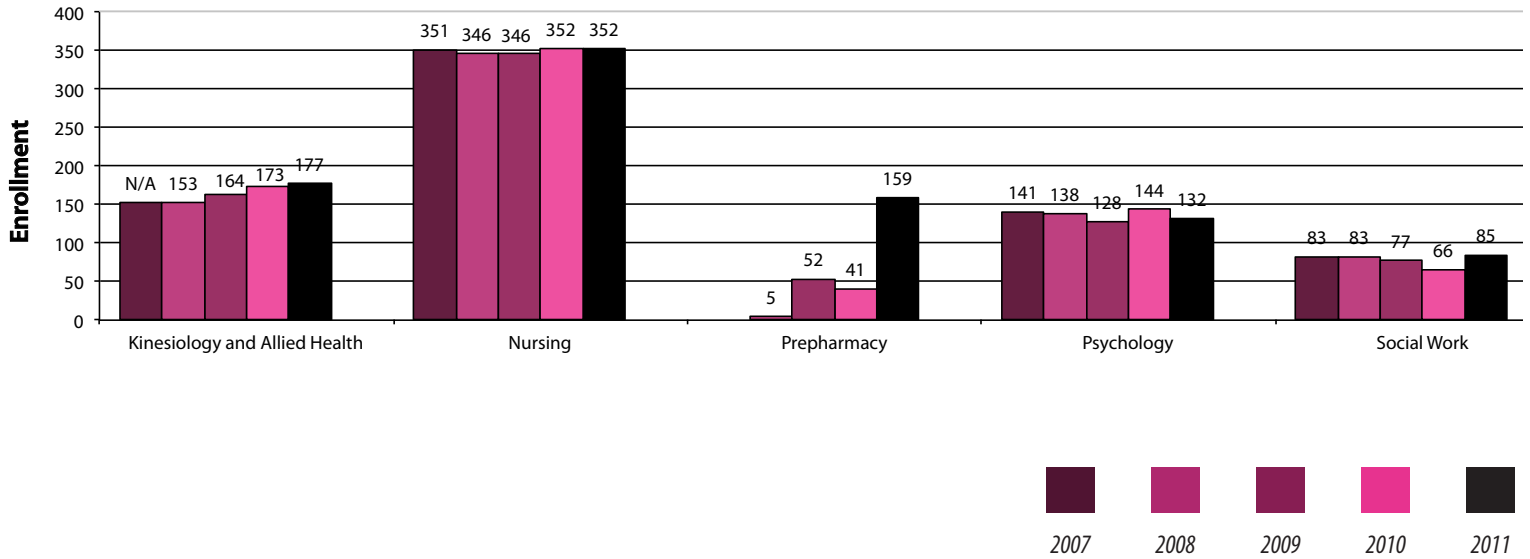


Chart 2.16

Source: Office of the Registrar

NOTE: Effective July 1, 2011, the college of health professions was created to include the school of pharmacy and departments of kinesiology and applied health, nursing, psychology, and social work. All corresponding majors and historical enrollment counts were relocated to correspond to new organizational structure.

## Enrollment by Major for College of Health Professions

	2007	2008	2009	2010	2011
<b>DEPARTMENT OF KINESIOLOGY AND ALLIED HEALTH</b>					
Allied Health	N/A	10	24	38	48
Athletic Training	25	26	28	36	33
Exercise Science — B.A.	23	11	17	14	9
Exercise Science — B.S.	35	37	36	29	33
Physical Activity and Sport Studies	1	N/A	N/A	N/A	N/A
Physical Education — Multi-Age	20	21	18	18	18
Sport and Exercise Studies	8	10	9	5	9
Sport Management	41	38	32	33	27
<b>TOTAL KINESIOLOGY AND ALLIED HEALTH</b>	<b>153</b>	<b>153</b>	<b>164</b>	<b>173</b>	<b>177</b>
<b>DEPARTMENT OF NURSING</b>					
<b>TOTAL NURSING</b>	<b>351</b>	<b>346</b>	<b>346</b>	<b>352</b>	<b>352</b>
<b>SCHOOL OF PHARMACY</b>					
Prepharmacy	N/A	5	52	93	159
<b>TOTAL PHARMACY</b>	<b>N/A</b>	<b>5</b>	<b>52</b>	<b>93</b>	<b>159</b>
<b>DEPARTMENT OF PSYCHOLOGY</b>					
Applied Psychology	41	37	39	13	5
Psychology	100	101	89	131	127
<b>TOTAL PSYCHOLOGY</b>	<b>141</b>	<b>138</b>	<b>128</b>	<b>144</b>	<b>132</b>
<b>DEPARTMENT OF SOCIAL WORK</b>					
Social Work	83	83	77	66	85
<b>TOTAL SOCIAL WORK</b>	<b>83</b>	<b>83</b>	<b>77</b>	<b>66</b>	<b>85</b>
<b>TOTAL COLLEGE OF HEALTH PROFESSIONS</b>	<b>728</b>	<b>725</b>	<b>767</b>	<b>828</b>	<b>905</b>

Chart 2.17

Source: Office of the Registrar

NOTE: N/A = Major not available