



MEMO

To: Department Chairman
 University Assessment Committee
 Administrative Council
 From: Sharon Johnson, Director, OIRE
 Date: Friday, November 11, 2005
 Subj: **Alumni Survey: Institution-Specific Items**

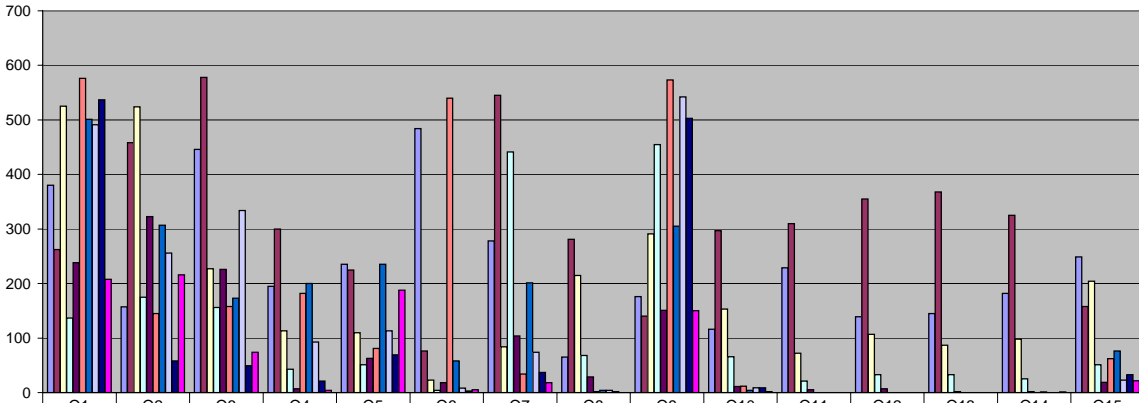
The two tables and set of questions that follow are part of the continuing set of reports the Office of Institutional Research and Effectiveness is providing the campus community from our initial Alumni Survey.

The Alumni Survey project is a 4-year project seeking to survey all Cedarville alumni from the graduating years of 1983 through 2006. The schedule for the surveys is shown in the tables below:

2005	2006	2007	2008
2003 graduates	2004 graduates	2005 graduates	2006 graduates
1999 graduates	2000 graduates	2001 graduates	2002 graduates
1995 graduates	1996 graduates	1997 graduates	1998 graduates
1991 graduates	1992 graduates	1993 graduates	1994 graduates
1987 graduates	1988 graduates	1989 graduates	1990 graduates
1983 graduates	1984 graduates	1985 graduates	1986 graduates

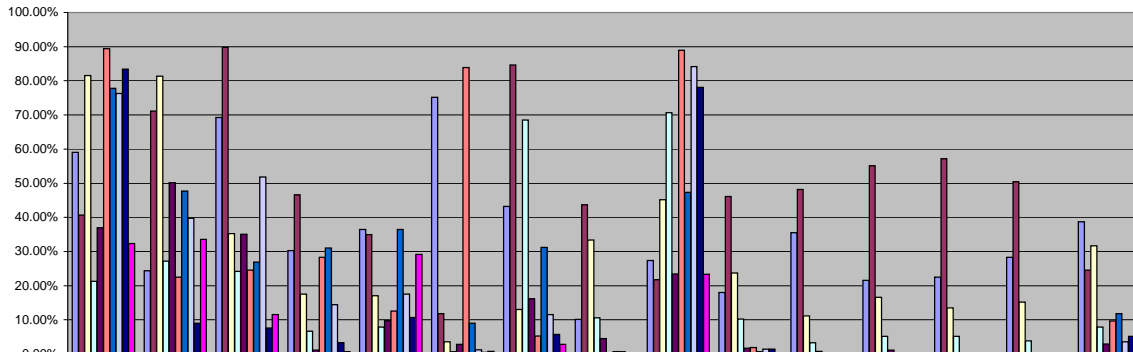
Department	Survey Year			
	2005	2006	2007	2008
Athletic Training	14	14	11	9
Bible	277	217	190	188
Business	555	499	477	472
Com Arts	197	220	180	205
Education	404	431	342	363
Engineering	113	120	76	89
Ex/Sports Sci	62	74	60	57
Hist/Soc Sci	187	176	180	196
Lang/Lit	180	182	157	156
Music/Art	76	59	51	76
Nursing	193	234	235	223
Psychology	192	131	114	142
Sci/Math	245	229	178	184
TOTAL	2695	2586	2251 + 2005 grads	2360 + 2006 grads

Responses to University Questions by Total Number of Responses



	Q1	Q2	Q3	Q4	Q5	Q6	Q7	Q8	Q9	Q10	Q11	Q12	Q13	Q14	Q15
A	380	157	446	195	235	484	278	65	176	116	229	139	145	182	249
B	262	458	578	300	225	76	545	281	140	297	310	355	368	325	158
C	525	524	227	113	110	23	84	215	291	153	72	107	87	98	204
D	137	175	156	43	51	4	441	68	455	66	21	33	33	25	51
E	238	323	226	7	63	18	104	29	151	11	5	7	2	2	19
F	576	145	158	182	81	540	34	2	573	12					62
G	501	307	173	200	235	58	201	4	305	4				1	76
H	491	256	334	93	113	8	74	4	542	9					23
I	537	58	49	21	69	3	37	2	503	9					33
J	208	216	74	4	188	5	18		150	2				1	22

Responses to University Questions by Percent of Total for each Question out of 644 Respondents



	Q1	Q2	Q3	Q4	Q5	Q6	Q7	Q8	Q9	Q10	Q11	Q12	Q13	Q14	Q15
A	59.01%	24.38%	69.25%	30.28%	36.49%	75.16%	43.17%	10.09%	27.33%	18.01%	35.56%	21.58%	22.52%	28.26%	38.66%
B	40.68%	71.12%	89.75%	46.58%	34.94%	11.80%	84.63%	43.63%	21.74%	46.12%	48.14%	55.12%	57.14%	50.47%	24.53%
C	81.52%	81.37%	35.25%	17.55%	17.08%	3.57%	13.04%	33.39%	45.19%	23.76%	11.18%	16.61%	13.51%	15.22%	31.68%
D	21.27%	27.17%	24.22%	6.68%	7.92%	0.62%	68.48%	10.56%	70.65%	10.25%	3.26%	5.12%	5.12%	3.88%	7.92%
E	36.96%	50.16%	35.09%	1.09%	9.78%	2.80%	16.15%	4.50%	23.45%	1.71%	0.78%	1.09%	0.31%	0.31%	2.95%
F	89.44%	22.52%	24.53%	28.26%	12.58%	83.85%	5.28%	0.31%	88.98%	1.86%					9.63%
G	77.80%	47.67%	26.86%	31.06%	36.49%	9.01%	31.21%	0.62%	47.36%	0.62%				0.16%	11.80%
H	76.24%	39.75%	51.86%	14.44%	17.55%	1.24%	11.49%	0.62%	84.16%	1.40%					3.57%
I	83.39%	9.01%	7.61%	3.26%	10.71%	0.47%	5.75%	0.31%	78.11%	1.40%					5.12%
J	32.30%	33.54%	11.49%	0.62%	29.19%	0.78%	2.80%	0.00%	23.29%	0.31%				0.16%	3.42%

UNIVERSITY ALUMNI SURVEY QUESTIONS 2005

1. Which of the following spiritual formation activities do you regularly engage in (check all that apply)?

- a. Active support for missionary activities
- b. Leadership at your local church (deacon, elder, part-time/unpaid staff, ministry area leader, etc.)
- c. Meditation on God's Word
- d. Participation in short term missions projects
- e. Personal evangelism
- f. Prayer and meditation
- g. Regular church attendance
- h. Serving at your local church (teacher, youth group sponsor, usher, choir member, etc.)
- i. Regularly supporting your local church financially
- j. Volunteer work with Christian agencies/groups OR community ministries

Number Percent

	Number	Percent
A	380	59.01%
B	262	40.68%
C	525	81.52%
D	137	21.27%
E	238	36.96%
F	576	89.44%
G	501	77.80%
H	491	76.24%
I	537	83.39%
J	208	32.30%

2. Which of the following GROUPS OF PEOPLE were very important to your spiritual development at Cedarville University (check all that apply)?

- a. Christian ministries staff
- b. Classroom teachers (in or out of class)
- c. Dorm roommates/friends
- d. Faculty advisor
- e. Faculty in bible classes
- f. Formal prayer/bible groups
- g. Discussions with classmates
- h. Local church
- i. Teammates and coaches
- j. Residence Assistants (RAs) or Residence Directors (RDs)

A	157	24.38%
B	458	71.12%
C	524	81.37%
D	175	27.17%
E	323	50.16%
F	145	22.52%
G	307	47.67%
H	256	39.75%
I	58	9.01%
J	216	33.54%

3. Which of the following CAMPUS ACTIVITIES contributed significantly to your personal spiritual growth while at Cedarville University (check all that apply)?

- a. Bible classes
- b. Chapel
- c. Church ministry
- d. Community service
- e. Courses in your major
- f. Organized prayer groups (formal or informal)
- g. MIS trip(s)
- h. Missionary/Bible Conferences
- i. Organized discipleship groups
- j. Student Life sponsored activities

A	446	69.25%
B	578	89.75%
C	227	35.25%
D	156	24.22%
E	226	35.09%
F	158	24.53%
G	173	26.86%
H	334	51.86%
I	49	7.61%
J	74	11.49%

4. Check one response from answers "a through e" AND one response for answers "f through j."

On the scale below how would you respond to this statement: "Library resource support for my information and research needs while at Cedarville University was excellent?"

- a. Strongly agree
- b. Agree
- c. Neutral
- d. Disagree
- e. Strongly disagree

A	195	30.28%
B	300	46.58%
C	113	17.55%
D	43	6.68%
E	7	1.09%

On the scale below how would you respond to this statement: "Library staff support for my information and research needs while at Cedarville University was excellent?"

- f. Strongly agree
- g. Agree
- h. Neutral
- i. Disagree
- j. Strongly disagree

F	182	28.26%
G	200	31.06%
H	93	14.44%
I	21	3.26%
J	4	0.62%

5. Which of the following post-graduation matters do you wish Cedarville University had better prepared you for (check all that apply)?

- a. Career selection issues
- b. Career transition issues
- c. Church-related issues
- d. Dating issues
- e. Ethical issues
- f. Family issues
- g. Financial issues
- h. Marriage issues
- i. Personal morality issues
- j. Social/political issues

A	235	36.49%
B	225	34.94%
C	110	17.08%
D	51	7.92%
E	63	9.78%
F	81	12.58%
G	235	36.49%
H	113	17.55%
I	69	10.71%
J	188	29.19%

6. The following responses ask about your involvement with online training or college credit courses both while attending Cedarville University and since leaving Cedarville University. Check one response from answers "a through e" AND one response for answers "f through j."

- a. I have taken no online courses since leaving Cedarville University
- b. I have taken 1-2 online courses since leaving Cedarville University
- c. I have taken 3-4 online courses since leaving Cedarville University
- d. I have taken 5-6 online courses since leaving Cedarville University
- e. I have taken more than 6 online courses since leaving Cedarville University

- f. I took no online courses while attending Cedarville University
- g. I took 1-2 online courses while attending Cedarville University
- h. I took 3-4 online courses while attending Cedarville University
- i. I took 5-6 online courses while attending Cedarville University
- j. I took more than 6 online courses while attending Cedarville University

A	484	75.16%
B	76	11.80%
C	23	3.57%
D	4	0.62%
E	18	2.80%

F	540	83.85%
G	58	9.01%
H	8	1.24%
I	3	0.47%
J	5	0.78%

7. As you consider the following areas of Cedarville with which most alumni have had fairly frequent contact, note the ones that have been helpful in maintaining your connection to Cedarville University (check all that apply):

- a. Alumni Office
- b. Cedarville publications aimed at alumni (TORCH, Inspire)
- c. Contacts from Advancement Division (was called Development Division) concerning giving opportunities
- d. Former classmates/friends
- e. Former faculty in your major
- f. Graduation events
- g. Homecoming events
- h. Regional alumni meetings
- i. Former teammates and/or coaches
- j. Academic Services (Registrar)

A	278	43.17%
B	545	84.63%
C	84	13.04%
D	441	68.48%
E	104	16.15%
F	34	5.28%
G	201	31.21%
H	74	11.49%
I	37	5.75%
J	18	2.80%

8. How would you rate your relationship to Cedarville University at this point in your life?

- a. Very important
- b. Important
- c. Neutral
- d. Unimportant
- e. Not very important at all

A	65	10.09%
B	281	43.63%
C	215	33.39%
D	68	10.56%
E	29	4.50%

9. Which of the following activities have you engaged in since graduating from Cedarville University (check all that apply)?

- a. Attended a regional alumni gathering
- b. Contacted faculty for a job recommendation
- c. Donated money to Cedarville University
- d. Encouraged others to consider attending Cedarville University
- e. Listened to Chapel broadcasts over the radio/internet?
- f. Read Cedarville University publications (like the TORCH or Inspire) in some detail
- g. Returned for homecoming activities
- h. Spoken positively to others about Cedarville University
- i. Visited the Cedarville University website
- j. Attended a CU athletic contest

A	176	27.33%
B	140	21.74%
C	291	45.19%
D	455	70.65%
E	151	23.45%
F	573	88.98%
G	305	47.36%
H	542	84.16%
I	503	78.11%
J	150	23.29%

10. "The general education courses at Cedarville University made significant contributions to my ability to communicate with others."

- a. Strongly agree
- b. Agree
- c. Neutral
- d. Disagree
- e. Strongly disagree

A	116	18.01%
B	297	46.12%
C	153	23.76%
D	66	10.25%
E	11	1.71%

11. "The general education courses at Cedarville University helped me to respond to issues in ways that reflect a biblical value system."

- a. Strongly agree
- b. Agree
- c. Neutral
- d. Disagree
- e. Strongly disagree

A	229	35.56%
B	310	48.14%
C	72	11.18%
D	21	3.26%
E	5	0.78%

12. "My general education courses at Cedarville University increased my critical thinking skills."

- a. Strongly agree
- b. Agree
- c. Neutral
- d. Disagree
- e. Strongly disagree

A	139	21.58%
B	355	55.12%
C	107	16.61%
D	33	5.12%
E	7	1.09%

13. "My general education courses at Cedarville University helped me gain a good understanding of many subject areas."

- a. Strongly agree
- b. Agree
- c. Neutral
- d. Disagree
- e. Strongly disagree

A	145	22.52%
B	368	57.14%
C	87	13.51%
D	33	5.12%
E	2	0.31%

14. "My general education courses at Cedarville University helped me to integrate the Christian faith with various parts of my life."

- a. Strongly agree
- b. Agree
- c. Neutral
- d. Disagree
- e. Strongly disagree

A	182	28.26%
B	325	50.47%
C	98	15.22%
D	25	3.88%
E	2	0.31%

15. Since graduating you may have made contact with any one or more of the following offices. Check the offices with which you have had positive, helpful contacts with since graduating (check all that apply):

- a. Academic Services (including the Registrar)
- b. Academic departments
- c. Advancement (or Development) Division (planned giving, Alumni Office, etc.)
- d. Athletic offices
- e. Business offices
- f. Career Services
- g. Christian Ministries Division
- h. Financial Aid
- i. Library
- j. Student Live Division

A	249	38.66%
B	158	24.53%
C	204	31.68%
D	51	7.92%
E	19	2.95%
F	62	9.63%
G	76	11.80%
H	23	3.57%
I	33	5.12%
J	22	3.42%