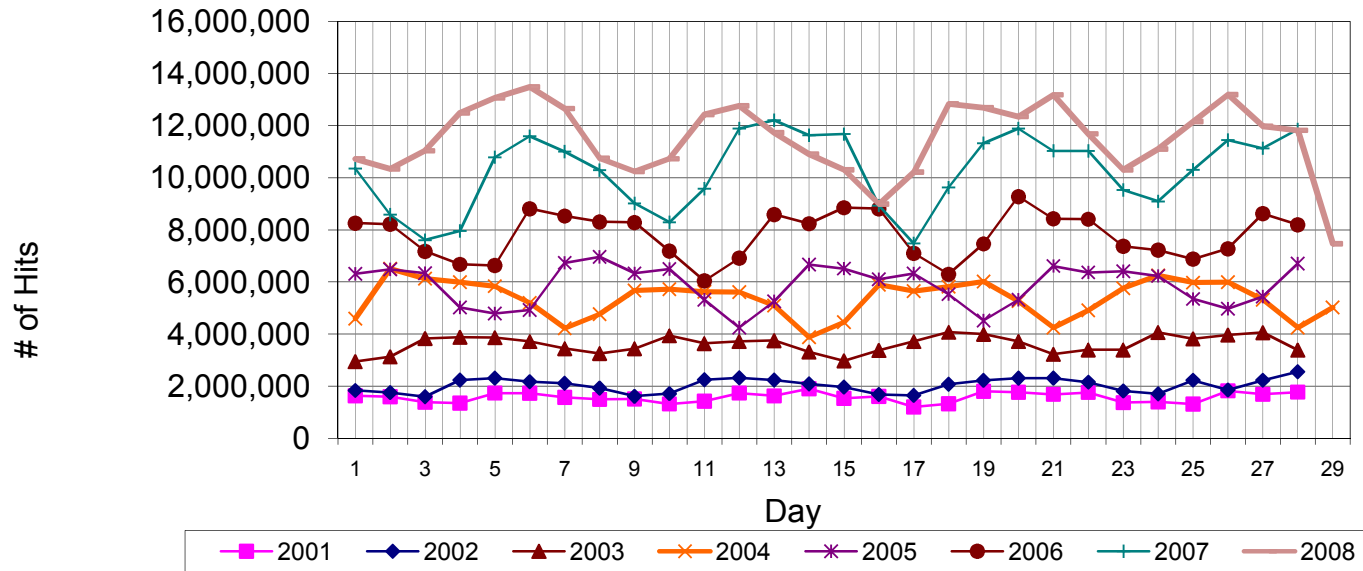


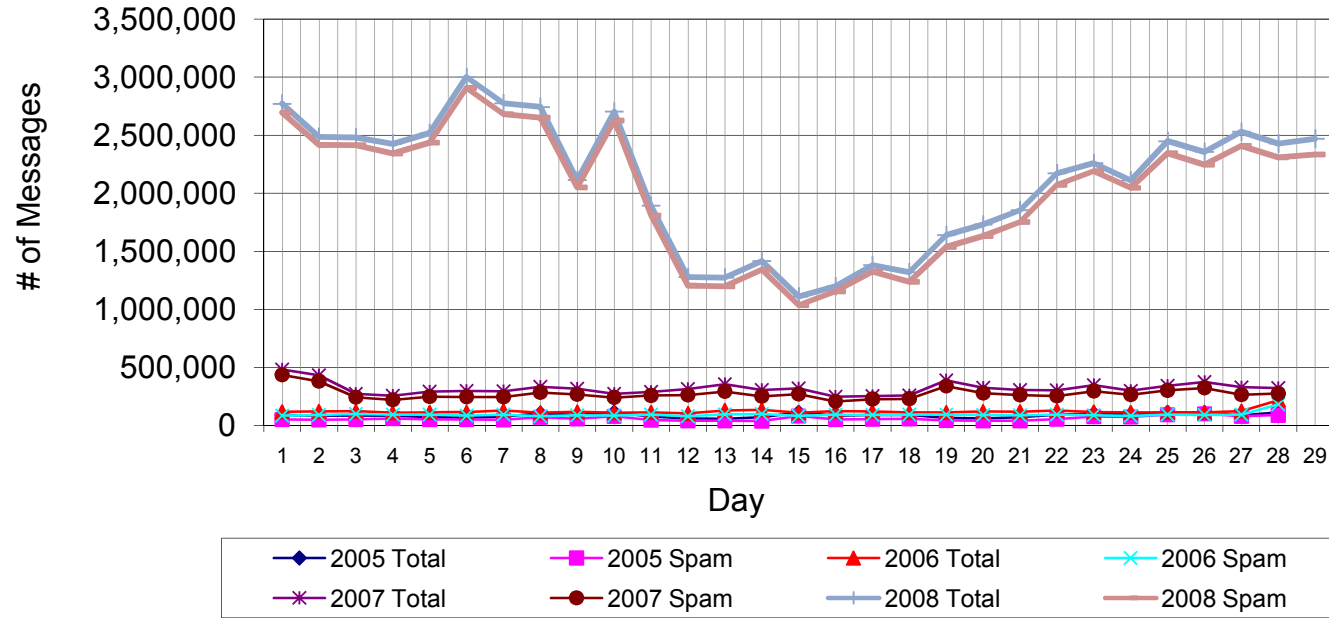
February Web Hits from CedarNet (access to off-campus sites)



The graph shows the number of Internet Web accesses ("hits") made from on-campus computers. Note that fetching a single Web page might produce several hits, depending on the number and type of embedded graphics.

	Total Count	Pct Change
Total Web hits, February 2001 (28 days)	44,139,006	
Total Web hits, February 2002 (28 days)	56,910,600	28.9%
Total Web hits, February 2003 (28 days)	100,967,640	77.4%
Total Web hits, February 2004 (29 days)	155,610,293	54.1%
Total Web hits, February 2005 (28 days)	164,162,882	5.5%
Total Web hits, February 2006 (28 days)	218,077,271	32.8%
Total Web hits, February 2007 (28 days)	286,972,214	31.6%
Total Web hits, February 2008 (29 days)	333,539,997	16.2%

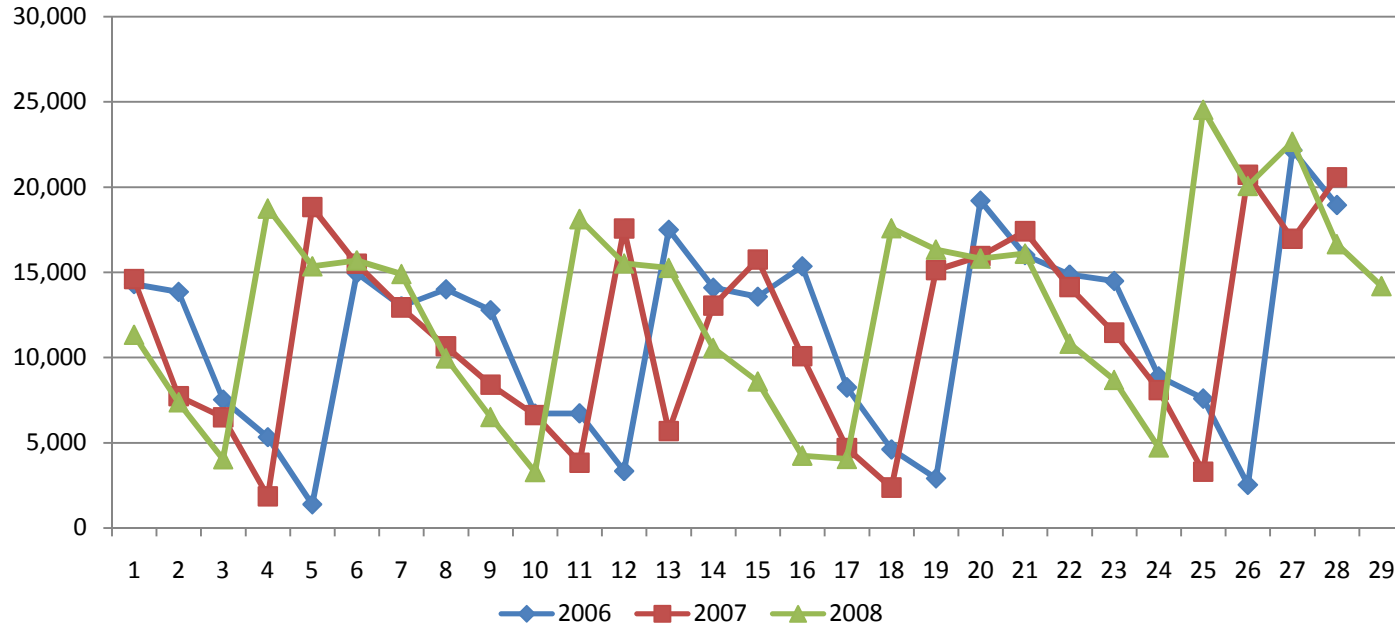
February Incoming Email



Total incoming email volume, February 2008	60,907,683
Total incoming spam blocked, February 2008	58,398,449
Net incoming email, February 2008	2,509,234
Percent email not blocked	4.12%

	Total Count	Pct Change One Yr	Pct Change Two Yr
Total incoming email volume, February 2005	2,474,973		
Total incoming email volume, February 2006	3,435,780	38.8%	
Total incoming email volume, February 2007	8,972,089	161.1%	262.5%
Total incoming email volume, February 2008	60,907,683	578.9%	1672.7%

Pages Printed



Total pages printed February 2006
 Total pages printed February 2007
 Total pages printed February 2008

Total Count	Pct Change
314,823	
320,244	1.7%
371,774	16.1%