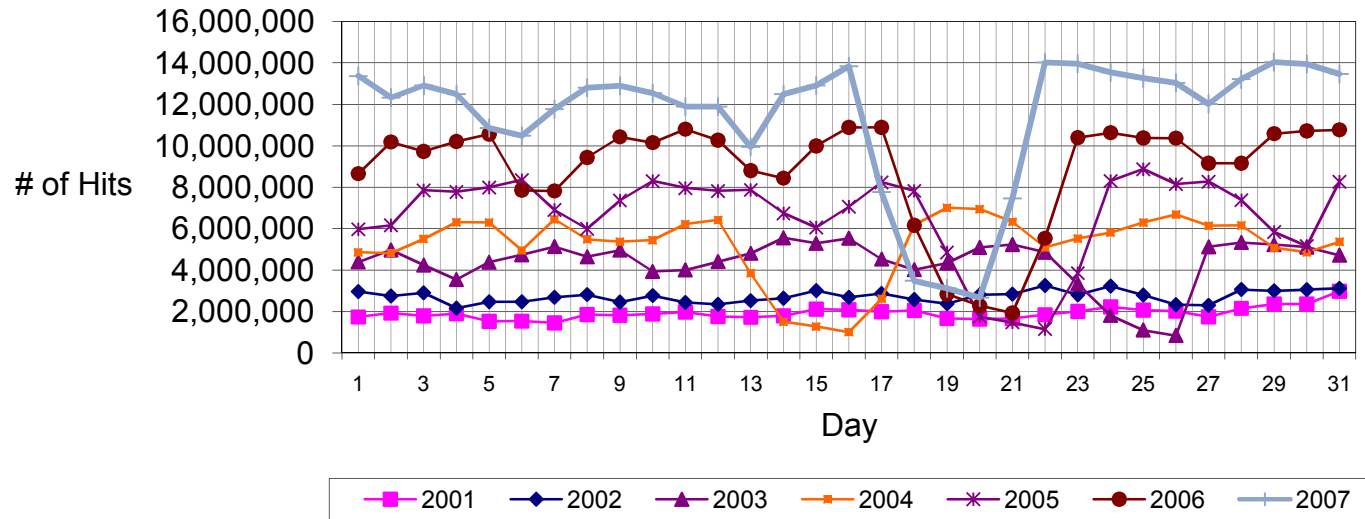


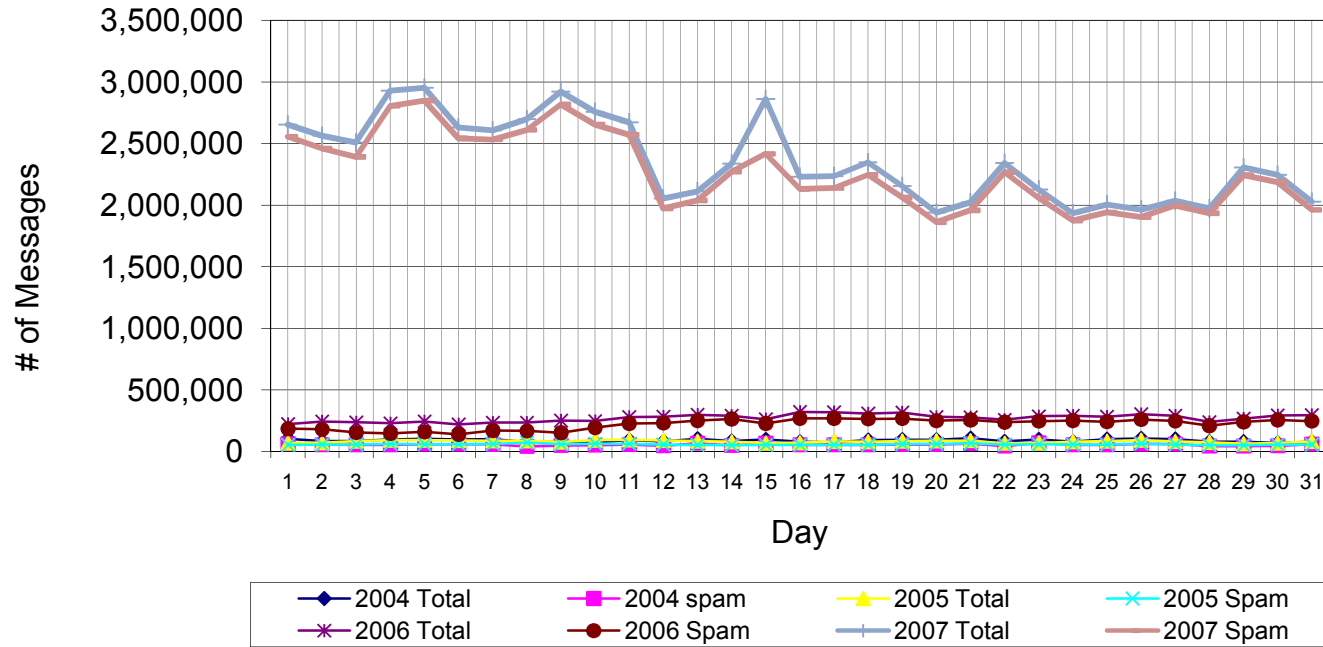
October Web Hits from CedarNet (access to off-campus sites)



The graph shows the number of Internet Web accesses ("hits") made from on-campus computers.
Note that fetching a single Web page might produce several hits, depending on the number and type of embedded graphics.

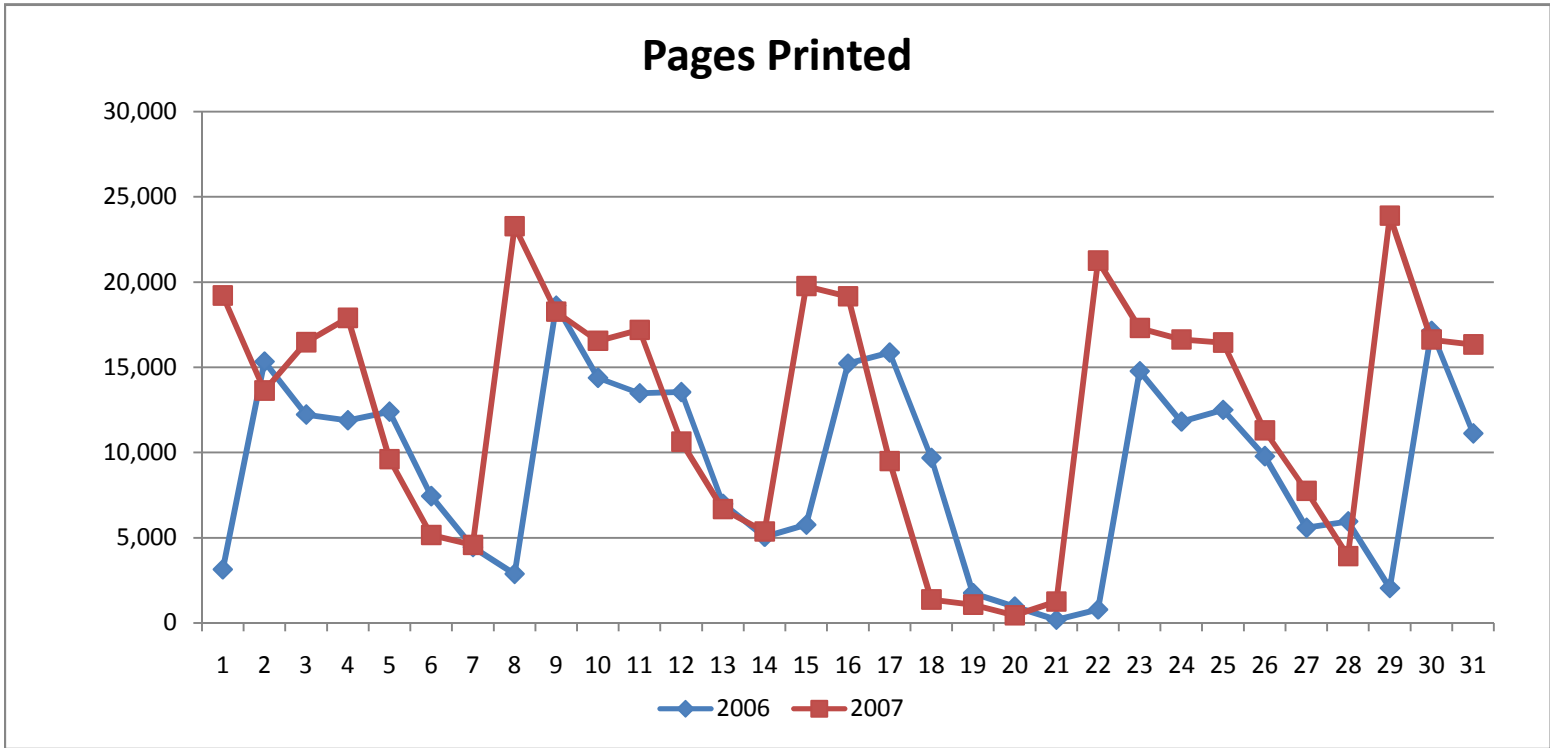
	Total Count	Pct Change One Yr	Pct Change Two Yr
Total Web hits, October 2001	59,725,897		
Total Web hits, October 2002	84,490,659	41.46%	
Total Web hits, October 2003	135,090,071	59.89%	126.18%
Total Web hits, October 2004	161,735,775	19.72%	91.42%
Total Web hits, October 2005	205,422,066	27.01%	52.06%
Total Web hits, October 2006	275,925,159	34.32%	70.60%
Total Web hits, October 2007	354,206,313	28.37%	72.43%

October Incoming Email



Total incoming email volume, October 2007	73,136,218
Total incoming spam blocked, October 2007	70,248,192
Net incoming email, October 2007	2,888,026
Percent email not blocked	3.9%

	Total Count	Pct Change One Yr	Pct Change Two Yr
Total incoming email volume, October 2004	2,797,795		
Total incoming email volume, October 2005	2,536,251	-9.3%	
Total incoming email volume, October 2006	8,436,526	232.6%	
Total incoming email volume, October 2007	73,136,218	766.9%	2783.63%



Total pages printed October 2006
 Total pages printed October 2007

Total Count	Pct Change
282,688	
388,412	37.4%