

CEDARVILLE UNIVERSITY CAMPUS SAFETY & SECURITY

Year **2005**

Security & Safety Related Calls/Incidents

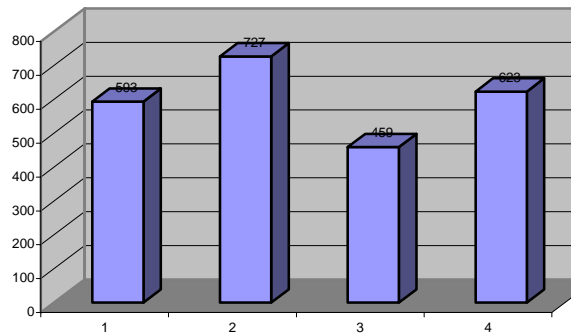
INCIDENT DESCRIPTION	Jan	Feb	Mar	1st QTR	Apr	May	Jun	2nd QTR	Jul	Aug	Sep	3rd QTR	Oct	Nov	Dec	4thQTR	ANNUAL
Abandoned bikes located	1	7	4	12	4	8	3	15	3	0	1	4	4	6	3	13	44
Animal Control	2	1	0	3	3	0	1	4	0	2	2	4	0	3	4	7	18
Disruptive Persons	0	1	1	2	3	0	0	3	1	0	0	1	0	2	2	4	10
EMS Assists	19	12	5	36	8	3	2	13	9	8	17	34	12	10	8	30	113
9-1-1 hang-up calls	0	0	0	0	0	0	0	0	1	0	0	1	2	1	0	3	4
Facilities Security-door openings	75	77	71	223	93	125	85	303	35	113	99	247	87	81	59	227	1000
Fire Alarms																	
Actual Fires	1	0	1	2	2	0	0	2	0	0	0	0	0	0	0	0	4
Academic/Business Bldgs.	2	2	0	4	2	2	1	5	0	0	1	1	1	1	0	2	12
Resident Halls	3	2	0	5	1	2	3	6	3	0	1	4	1	2	8	11	26
Fire Drills	0	0	0	0	7	0	0	7	0	0	0	0	4	3	0	7	14
Fire Safety Corrections	26	40	28	94	61	23	144	228	10	11	17	38	52	20	29	101	461
Haz-Mat Incidents	4	2	0	6	0	0	0	0	0	1	1	2	0	2	0	2	10
Missing Persons	0	0	0	0	1	0	0	1	0	1	1	2	1	0	0	1	4
Parking & Traffic Issue	5	13	2	20	8	4	7	19	1	0	10	11	5	9	0	14	64
Police Assists	0	0	2	2	1	0	1	2	0	0	1	1	1	0	2	3	8
Property Damage	1	0	1	2	4	1	0	5	0	0	1	1	3	2	0	5	13
Public Relations Assists	4	12	6	22	3	4	2	9	1	0	2	3	6	2	5	13	47
Quality of Life - Maint. Problems	11	5	8	24	7	6	6	19	3	4	6	13	6	7	2	15	71
Resident Life Issue	0	0	2	2	5	3	2	10	1	1	0	2	1	3	0	4	18
Safety Investigations	2	5	3	10	8	1	1	10	1	1	0	2	1	4	2	7	29
Security Alarms	1	0	0	1	1	0	0	1	1	0	0	1	3	1	3	7	10
Security Detail (special events)	5	9	1	15	0	1	1	2	1	1	0	2	3	8	3	14	33
Security Investigations	2	5	2	9	1	0	1	2	1	0	3	4	8	10	2	20	35
Severe Weather Alerts	3	0	0	3	0	0	3	3	0	0	0	0	0	2	1	3	9
Suspicious Veh. Investigations	1	3	3	7	4	5	5	14	7	6	5	18	2	5	3	10	49
Suspicious Per. Investigations	3	4	2	9	3	2	2	7	2	2	5	9	3	2	2	7	32
Traffic Accident Investigations	1	2	5	8	1	2	0	3	2	2	3	7	1	1	4	6	24
Transports/Escorts	7	13	9	29	11	2	0	13	0	4	16	20	8	9	11	28	90
Vehicle Assists																	
jump starts	9	6	0	15	5	1	2	8	2	1	4	7	6	9	11	26	56
lock-out service	4	7	10	21	7	1	4	12	6	4	5	15	9	6	9	24	72
mechanical breakdown	3	0	0	3	0	0	0	0	0	0	1	1	0	1	2	3	7
other	2	2	0	4	1	0	0	1	0	1	3	4	2	3	1	6	15
CATEGORY TOTALS	197	230	166	593	255	196	276	727	91	163	205	459	232	215	176	623	2402

Patrol Officer Response Criminal Activity Related Incidents

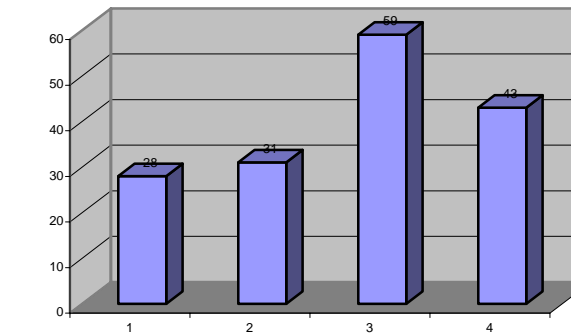
Year **2005**

INCIDENT DESCRIPTION	Jan	Feb	Mar	1st QTR	Apr	May	Jun	2nd QTR	Jul	Aug	Sep	3rd QTR	Oct	Nov	Dec	4thQTR	ANNUAL
Arrests by police	0	0	0	0	0	0	0	0	0	0	0	0	0	0	3	3	3
Burglary	0	0	0	0	0	1	0	1	1	3	1	5	0	0	0	0	6
Crim. Endangerm't (acid bombs)	0	0	0	0	0	0	0	0	0	0	1	1	0	0	0	0	1
Criminal Mischief	0	2	1	3	1	1	1	3	8	1	3	12	1	1	2	4	22
Disorderly Conduct	1	2	1	4	11	4	2	17	1	1	2	4	1	1	7	9	34
Illegal Contraband	0	0	0	0	0	0	0	0	0	0	1	1	0	0	0	0	1
Inducing Panic (false alarms)	0	0	0	0	0	0	0	0	0	0	0	0	0	0	2	2	2
Internet/Telephone Fraud	0	0	1	1	0	1	1	2	0	0	0	0	0	0	1	1	4
Menacing	1	0	0	1	0	0	0	0	0	0	0	0	0	0	0	0	1
Stalking	0	0	0	0	0	0	0	0	0	1	0	0	0	0	0	0	1
TCC Harassment	5	0	1	6	1	0	0	1	1	1	1	3	4	0	2	6	16
Theft of Property																	0
student property from premises	3	0	1	4	2	1	0	3	2	2	3	7	1	0	4	5	19
student property from vehicles	0	0	1	1	1	0	1	2	0	0	8	8	0	0	0	0	11
bikes	1	3	1	5	1	0	0	1	1	0	2	3	1	4	1	6	15
university property	1	0	1	2	0	0	0	0	0	1	0	1	0	0	0	0	3
Trespass	0	0	0	0	0	0	0	0	1	0	0	1	0	0	3	3	4
Vandalism/Criminal Damaging																	0
vehicular related	0	0	1	1	1	0	0	1	0	0	12	12	0	0	1	1	15
campus buildings	0	0	0	0	0	0	0	0	1	0	0	1	1	0	2	3	4
CATEGORY TOTALS	12	7	9	28	18	8	5	31	16	10	34	59	9	6	28	43	162
INCIDENT TOTALS	209	237	175	621	273	204	281	758	107	173	239	518	241	221	204	666	2564

Security & Safety Incidents



Criminal Activity



Quarterly Totals

