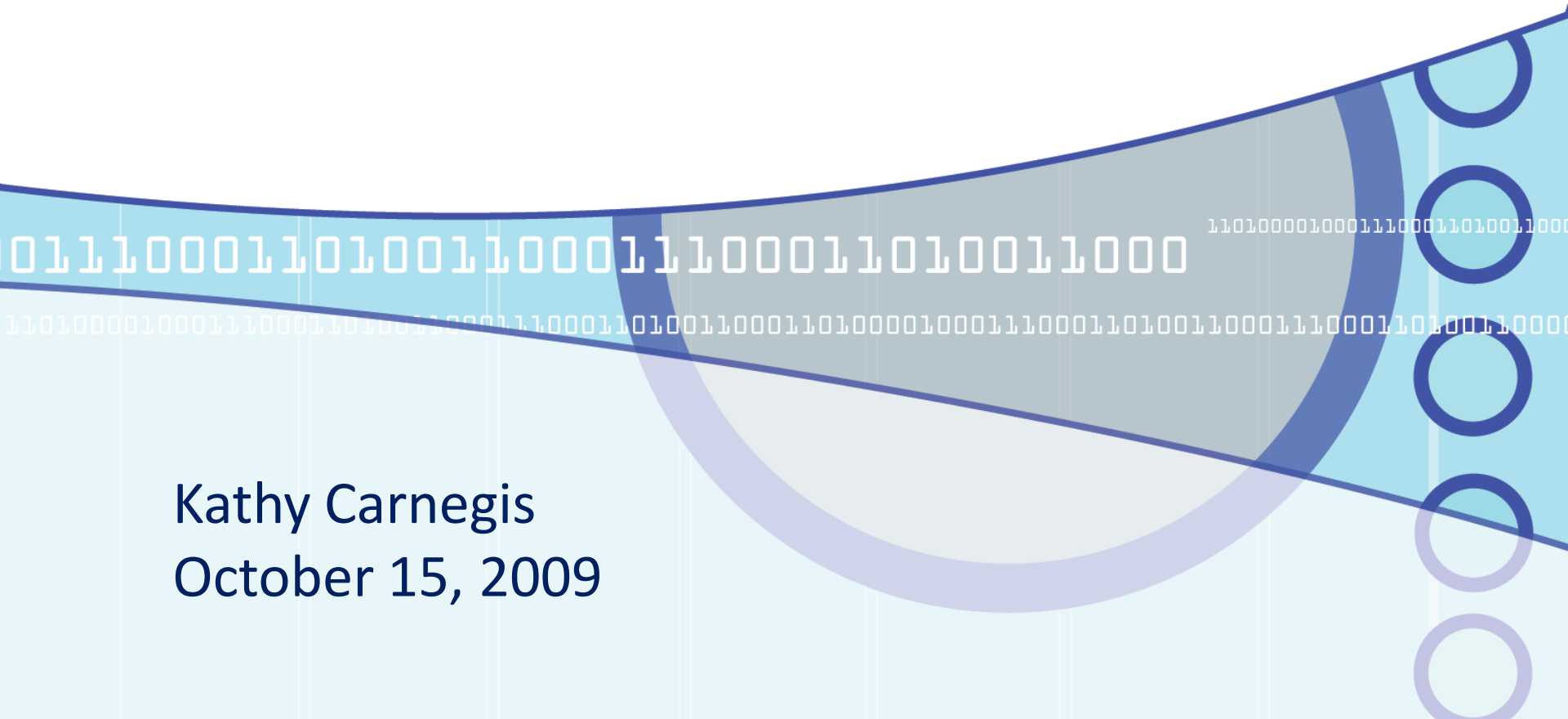


# Guest Access to CedarNet

Kathy Carnegis  
October 15, 2009



# Who Needs A Temporary CedarNet Account ?

User Type	Yes	No	Maybe
Alumni		X	
Camper/ Conference Attendee	X		
Missionary	X		
Parent			X
Prospective Student			X
Visitor / Speaker	X		

To request a large number of guest accounts:  
[www.cedarville.edu/csr](http://www.cedarville.edu/csr) (choose "Other")

# Authorized Departments

**All Faculty, Staff, and Students**  
may create temporary CedarNet  
accounts.

# Temporary Account Creation

CedarInfo

```
graph TD; A[CedarInfo] --> B[Campus Services]; B --> C[Create Temporary CedarNet User];
```

Campus Services

Create Temporary  
CedarNet User

# Temporary Account Setup

**CEDARVILLE**  
UNIVERSITY™

[About](#) | [Academics](#) | [Admissions](#) | [Alumni](#) | [Athletics](#) | [Donors](#) | [Events](#) | [Ministries](#) | [Offices](#) | [Student Life](#)

## Create Temporary CedarNet User

Last name

First name

Account duration (days)  ▼

<a href="#">[Main Menu]</a> <a href="#">[End Session]</a>	User: Kristen Recupero [krecupero•1516389] Expiration: October 12, 2009 at 02:06:36 PM (EST) IP Address: 163.11.229.120
--	---

# Temporary User Credentials



**CEDARVILLE**  
UNIVERSITY™

[About](#) | [Academics](#) | [Admissions](#) | [Alumni](#) | [Athletics](#) | [Donors](#) | [Events](#) | [Ministries](#) | [Offices](#) | [Student Life](#)

## Create Temporary CedarNet User

Last name	Doe
First name	John
Login name	TEMP8004
Password	nikise
Expiration	10/20/2009

This account may be used for browsing the Web from your own computer or the University's wireless network. For help with configuring your system to connect to the wireless network, visit

[www.cedarville.edu/wireless](http://www.cedarville.edu/wireless)

or

[www.cedarville.edu/spc](http://www.cedarville.edu/spc)

or

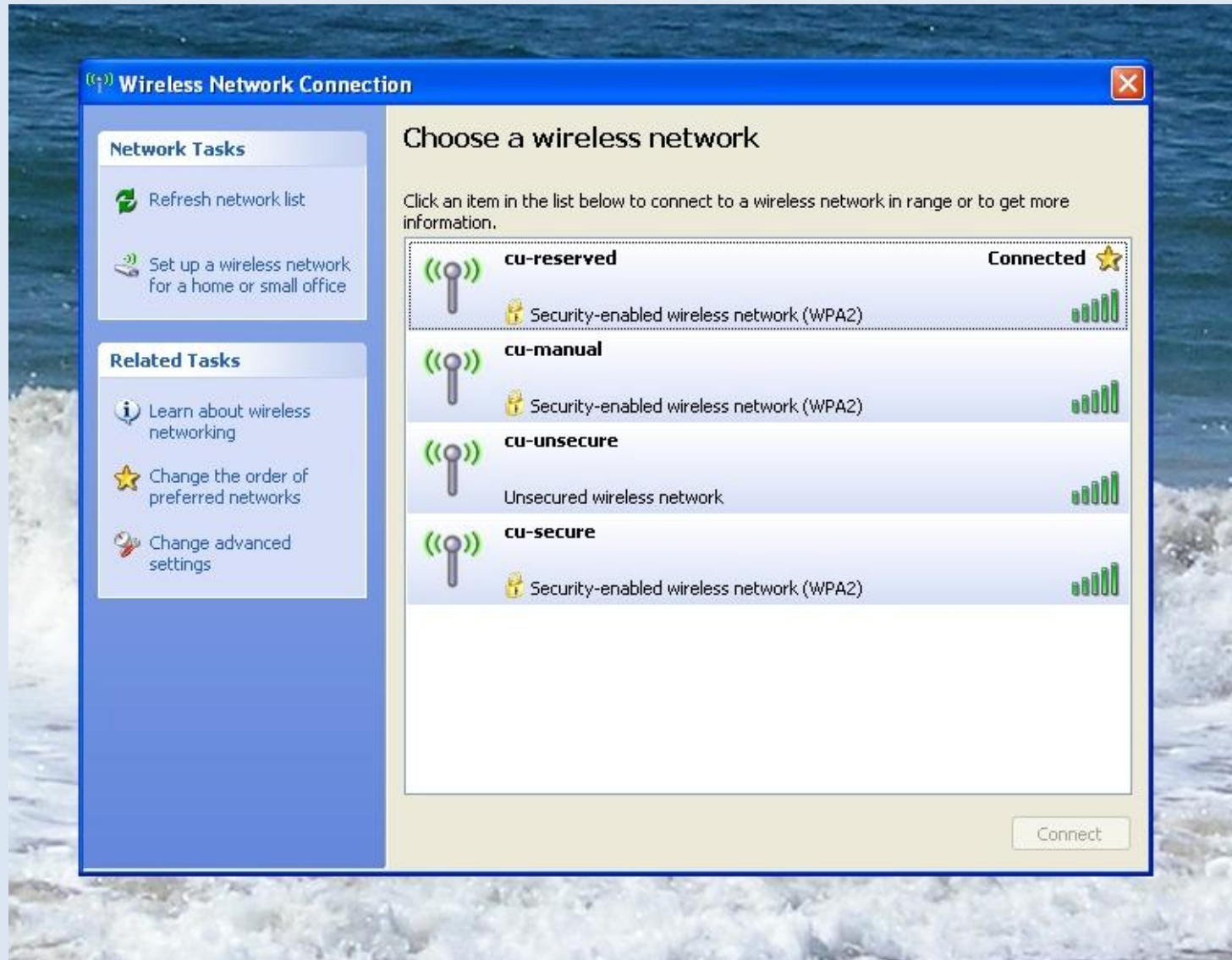
[www.cedarville.edu/help/Guest+Network+Access](http://www.cedarville.edu/help/Guest+Network+Access)

# What Functions Are Available?

- **CedarInfo** (select options)
- **CedarNet Programs**  
(from University Computer only)
- **Internet**
- **WebAccess to Email**  
(if available with their email provider)

# View Available Wireless Networks

(from a notebook computer)



# CedarWireless Options

What Cedarville Requires

What the User Receives

Wireless Network	Username & Password (required)	Computer Registration (required)	High-capacity (faster)	Encrypted (more secure)
Unsecure	Yes		Yes	
Secure	Yes	Yes	Yes	Yes
Reserved	Yes	Yes	Yes	Yes
Manual	Yes	Yes	Yes	Yes

# Getting Help...

- **Login Credentials**

- Call **Computer Services** ext. 7905

- **SPC or Wireless Assistance**

- **SPC Assistance Center** ext. 4156
- **Counter Hours** are Monday through Friday  
11am-4:30pm
- **Location** is external entrance to Tyler  
across from Milner

# Your Questions?

- **Guest Handouts available**

(In the near future, a PDF will be available from guest account screen)