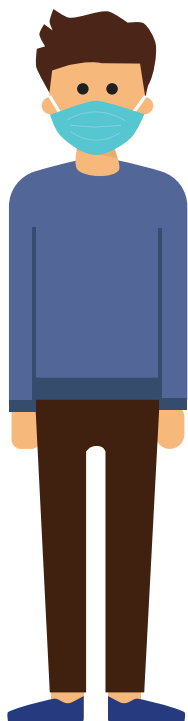


NEW HELP WITH FOOD FOR COLLEGE STUDENTS DUE TO COVID-19



If you have an **Expected Family Contribution (EFC) of \$0** on your most recent FAFSA, or if you are **eligible for work study, even if you are not participating**, you may be eligible for **\$234 per month or more in SNAP!**



Your household income and other circumstances may impact your eligibility.

To learn more and apply for \$234 or more per month in funds to buy groceries, visit **benefits.ohio.gov**.

