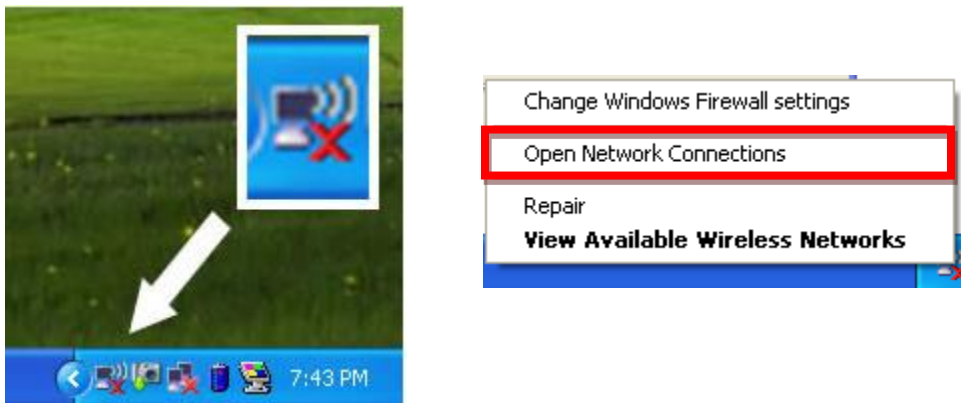
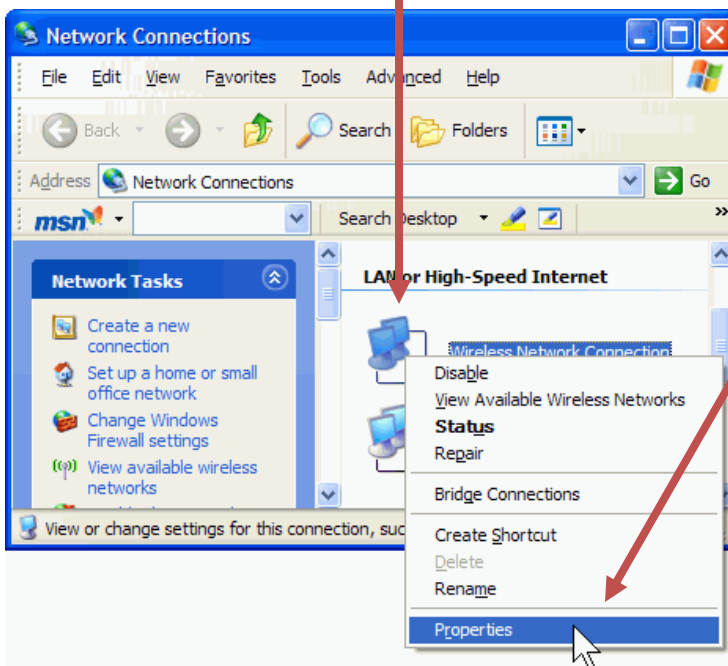


Windows XP: cu-secure Wireless

1. Make sure the Wi-Fi is enabled on your computer
2. **Right-click** the wireless icon in the bottom right of the screen and select **Open Network Connections**

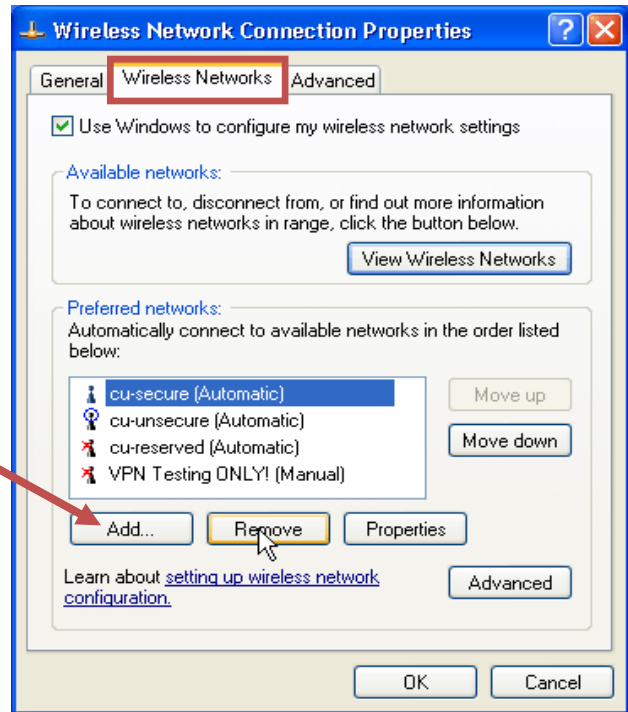


3. **Right-click** the **Wireless Network Connection** icon then select **Properties**

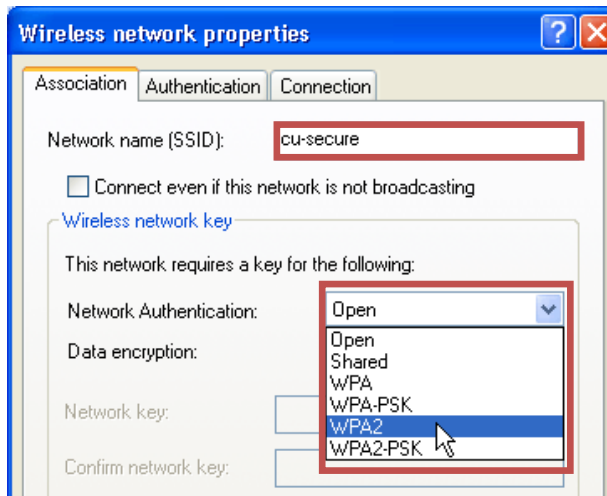


4. Select the **Wireless Networks** tab, then remove all cu-secure connections by selecting them and clicking **[Remove]**

5. Click **[Add]**

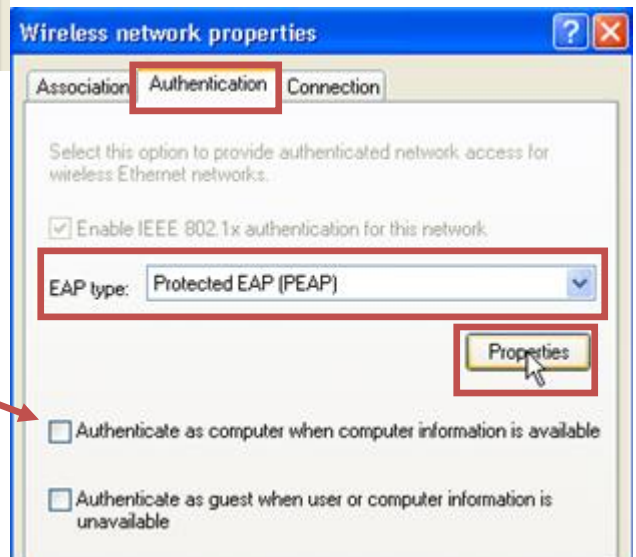


6. Type **cu-secure** in **Network name (SSID):** field, then select **WPA2** in the **Network Authentication:** dropdown



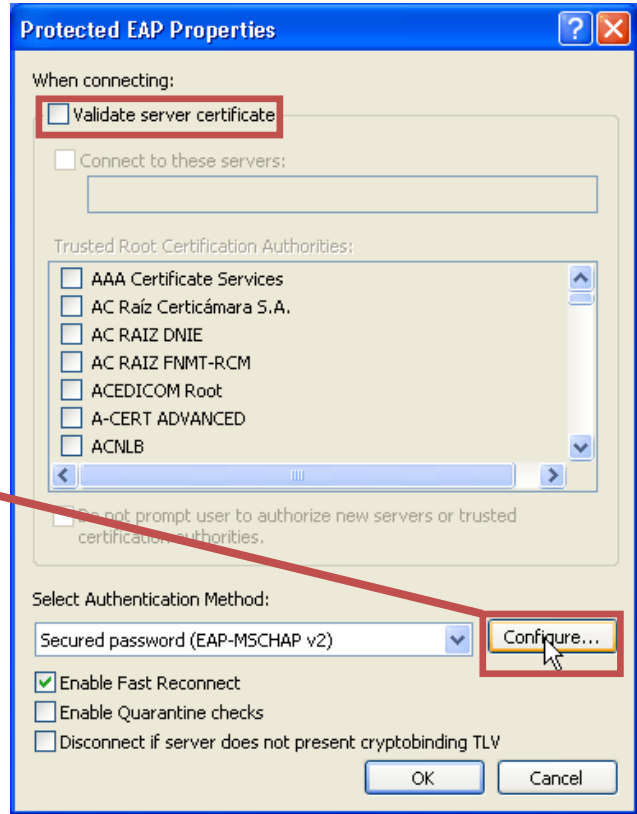
7. Select the **Authentication** tab, then select **Protected EAP (PEAP)** in the **EAP type:** dropdown, then select **[Properties]**

8. **Uncheck** the **Authenticate as computer** box



9. Uncheck **Validate server certificate** box, then select **[Configure]** in the lower right of the window

10. Uncheck the box in the window that appears then click **[OK]**

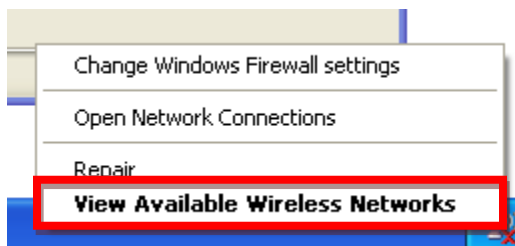


11. Click **[OK]** in all the open windows

12. **Right-click** the wireless icon in the bottom right of the screen

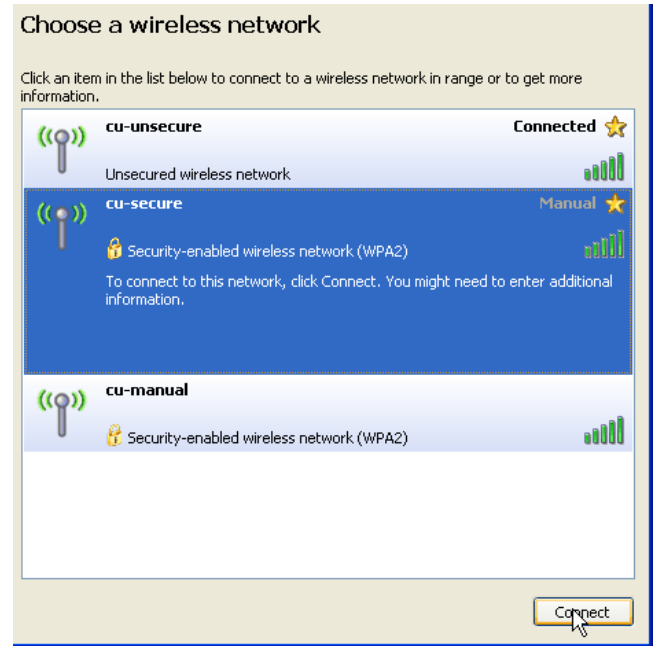


13. Click **View Available Wireless Networks**



14. Click **cu-secure** in the list of networks, then click **[Connect]**

15. The network will now configure and connect



16. **Click** the bubble box that appears in the lower right of your screen which says **Click here to select a certificate or other credentials...**



17. Enter your CedarNet username and password but leave the **Logon domain blank**, then click **[OK]**



18. Congratulations! You are now finished with the Windows XP cu-secure wireless setup. If you are still having difficulties with your wireless connection, please feel free to call (937)-766-7905, or come by our Computer Assistance Center for further support.